

# Global Education Cluster

## Educational Infrastructure and Supplies Thematic Group

Simon Devine



## Current

One size fits all

Testing ground for ideas

Slow procurement process

Inter-organisational best practice not shared

## Aim

Appropriate

Dissemination of ideas

Efficient procurement process

Inter-organisational best practice shared and developed

# Build-a-School



# Build-a-School

EpiCollect

14:22

**Are the affected population**

- At home
- IDPs
- Refugees
- In camps
- In host comm

**Do you need**

Yes

No

**Does the sc functioning**

Yes

No

**Do you hav**

**Which country are you working in?**

Country

**What type of emergency are you working in?**

- Flood
- Hurricane
- Drought
- Tsunami
- Earthquake
- Famine
- Nuclear Biological Chemical
- Conflict

**How many children require a school?**

numberofchildren

Save



11:58

talk

Can you collect from the North of the field

Me: Yes no problem

Send

# Build-a-School



**EpiCollect**

Are the affected population

- At home
- IDPs
- Refugees
- In camps
- In host comm

Do you need

Yes

No

Does the sc functioning

Yes

No

Do you hav

**New Entry**

Which country are you working in?

Country

What type of emergency are you working in?

- Flood
- Hurricane
- Drought
- Tsunami
- Earthquake
- Famine
- Nuclear Biological Chemical
- Conflict

How many children require a school?

numberofchildren

Save



# Build-a-School



EpiCollect  
Are the affected population  
At home   
IDPs   
Refugees   
In camps   
In host comm   
Do you need  
Yes   
No   
Which country are you working in?  
Country  
Does the sc  
functioning  
Yes   
No   
What type of emergency are you  
working in?  
Flood   
Hurricane   
Drought   
Tsunami   
Earthquake   
Famine   
Nuclear Biological Chemical   
Conflict   
Do you hav  
How many children require a school?  
numberofchildren  
Save



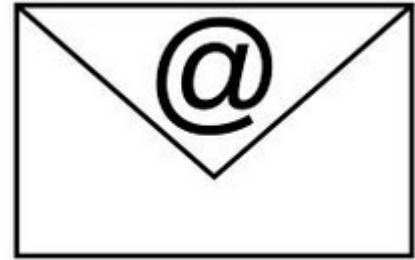
A map showing a geographical region with several red data points plotted on it. A small inset image shows a landscape with green hills.



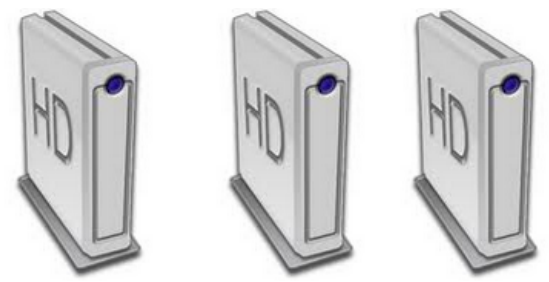
A black silhouette icon of a person sitting at a desk with a computer monitor and keyboard.



A mobile phone interface showing a map with a red location pin and a 'talk' speech bubble icon.

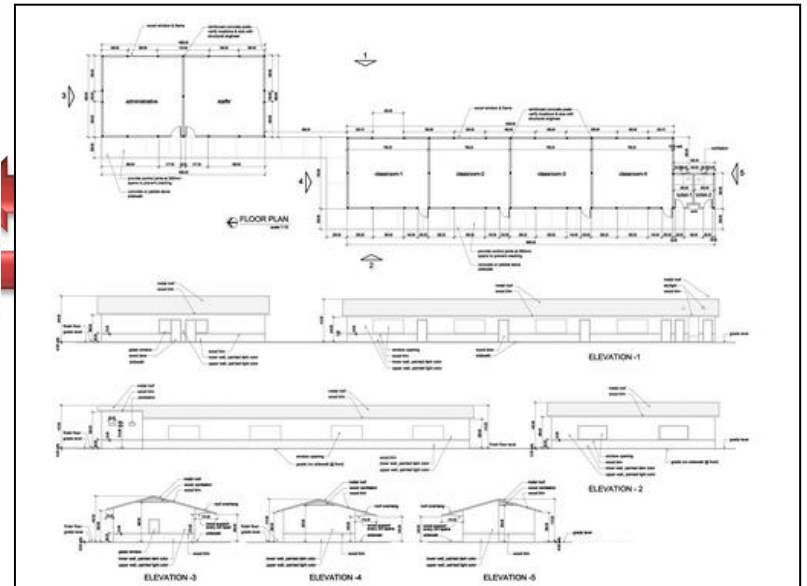


A simple line-art icon of an envelope with a large '@' symbol on it.





# Build-a-School



Save the Children



Microsoft Excel - SAP BOM Import.xls

File Edit View Insert Format Tools Data Window Help Add-Ins PDF

Sheet1 Window

Quantity	Type	Part Name	Purchased Cost	Material	Manufacturing Process
1	Part	SKCAD2537-1_PWR_BOX_MDL	No	Aluminum	Machining
5	Part	SKCAD2537-2_PWR_BOX_REAR	Yes 1000	Steel	Machining
6	Part	SKCAD2537-3_PWR_BOX_FRT	Yes 1000	Steel	Machining
7	Part	27212-2-9	Yes 1000	Steel	Machining
8	Part	MS25244-20_125	Yes 1000	Steel	Machining
9	Part	MS25244-25_125	Yes 1000	Steel	Machining
10	Part	CIRCUIT_BREAKER_170-001-200	Yes 1000	Steel	Machining
11	Sub-Assembly	METER_050VDC_MR26W0500CVVR	No	Stainless Steel	Machining
12	Part	MS3452W36-5P	No	Steel	Sheet Metal Forming
13	Part	MS3452W36-5S	Yes 1000	Steel	Machining
14	Part	SOLENOID_WHITE-ROGERS_P1695-905	Yes 1000	Steel	Machining
15	Part	FUSE_BLOCK_BLUE-SEA-SYM_5007	Yes 200	Steel	Machining
16	Part	SKCAD2537-4_PWR_BOX_TOP	Yes 500	Steel	Machining
17	Part	MS1959-19	Yes 1000	Steel	Machining
18	Part	27212-3-3	Yes 1000	Steel	Machining
19	Part	MS25244-5_125	Yes 1000	Steel	Machining
20	Part	MS15795-805	Yes 1000	Steel	Machining
21	Part	MS35338-135	Yes 1000	Steel	Machining
22	Part	MS1957-28	Yes 1000	Steel	Machining
23	Part	LED_LAMP_3A_COEEM	Yes 1000	Steel	Machining

# Build-a-School

Funding partners

