

SHELTER/CCCM CLUSTERS in PAKISTAN

COORDINATION STRUCTURE

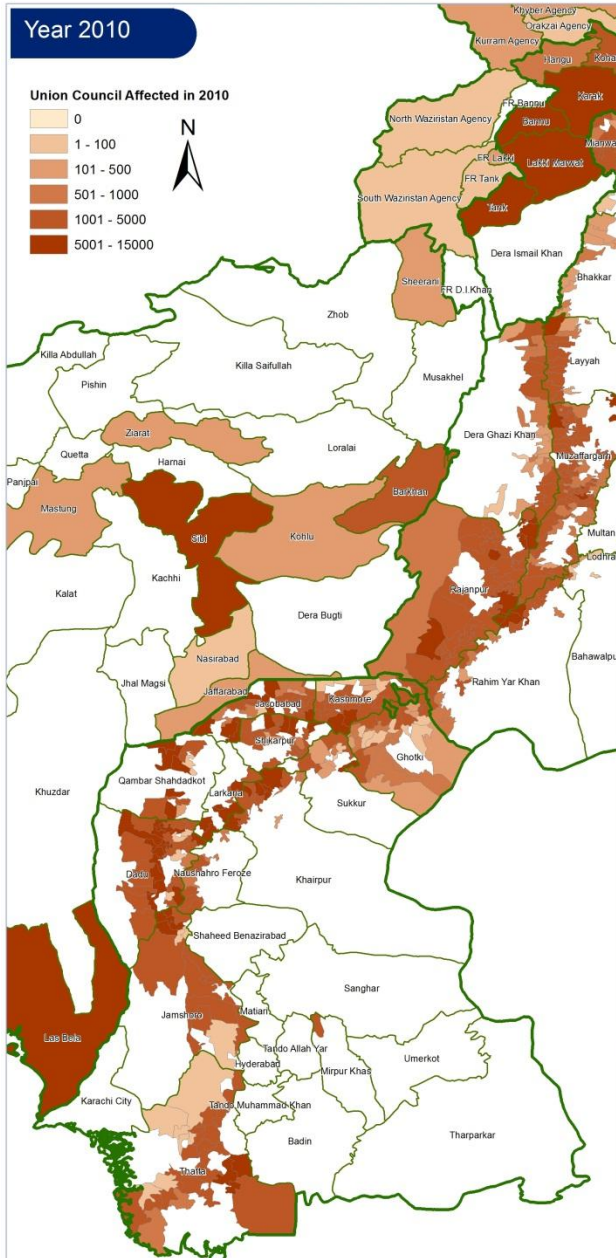
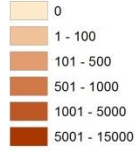
- National : IOM
- Provincial:
 - Complex emergency KP/FATA (stand alone clusters): UNHCR
 - Natural disaster:
 - Sindh: IOM, ACTED, Helpage
 - Balochistan: NRC
- SHELTER AND CCCM
- TSSU – Temporary Settlements Support Unit
 - Capacity building and DTM/ multi-sector assessments

Flood Affected Union Councils in 2010, 2011 and 2012 in Pakistan

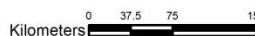
3rd October 2012

Year 2010

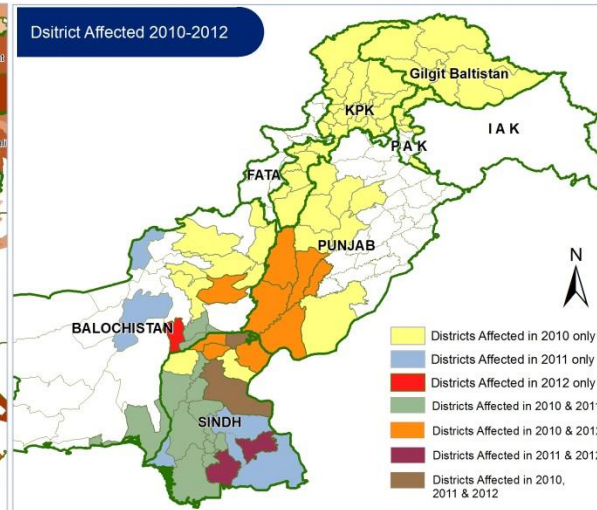
Union Council Affected in 2010



Datasource : 2010 - OCHA UC Ranking

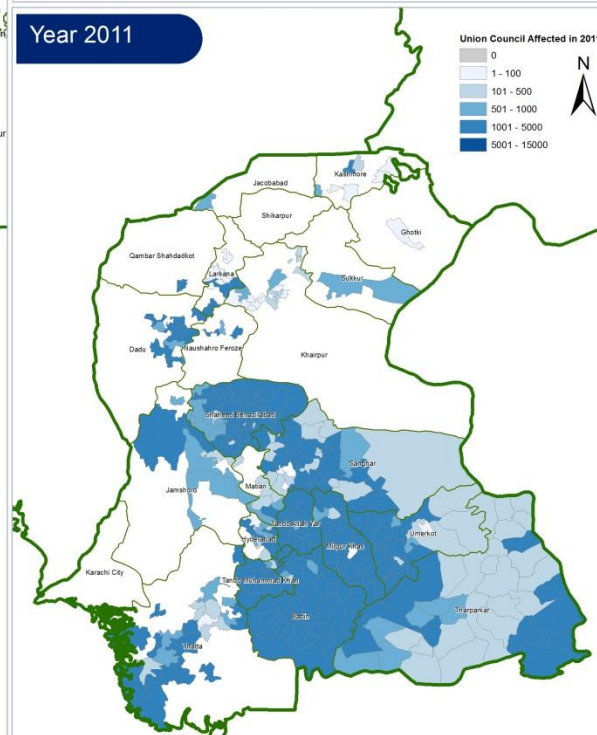
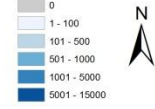


District Affected 2010-2012



Year 2011

Union Council Affected in 2011

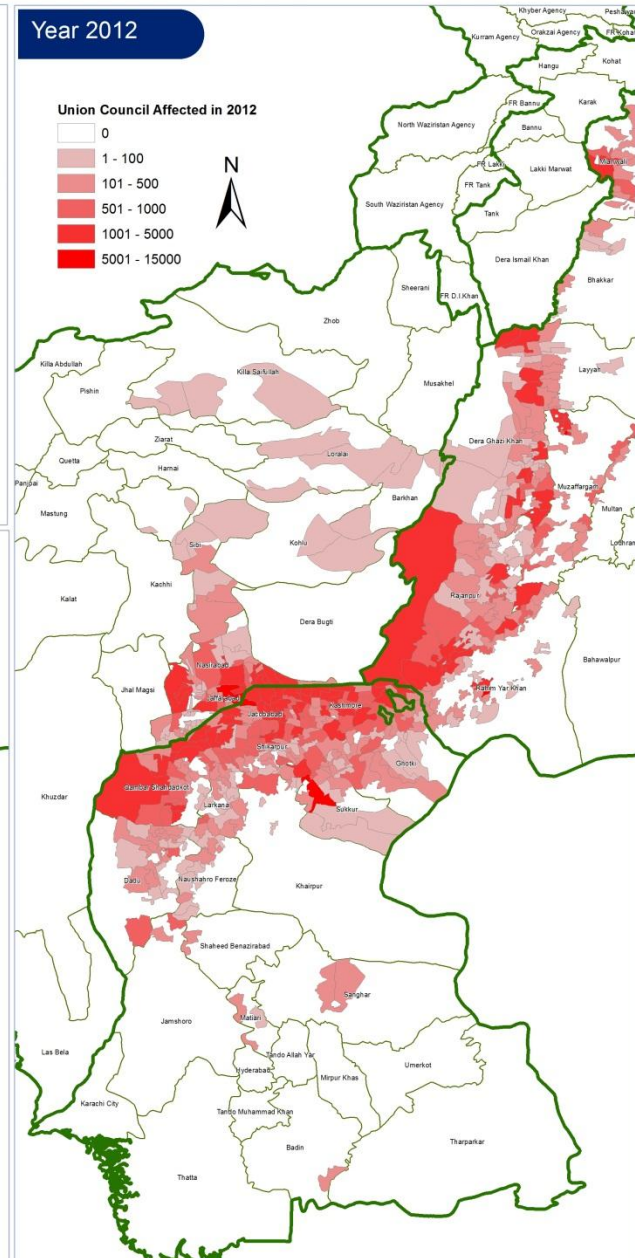
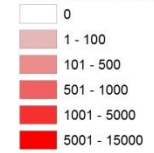


Datasource : 2011 - Shelter Cluster UC Prioritisation estimates



Year 2012

Union Council Affected in 2012



Datasource : 2012 - Satellite Imagery analysis using proportions of damaged and destroyed estimated from MIRA

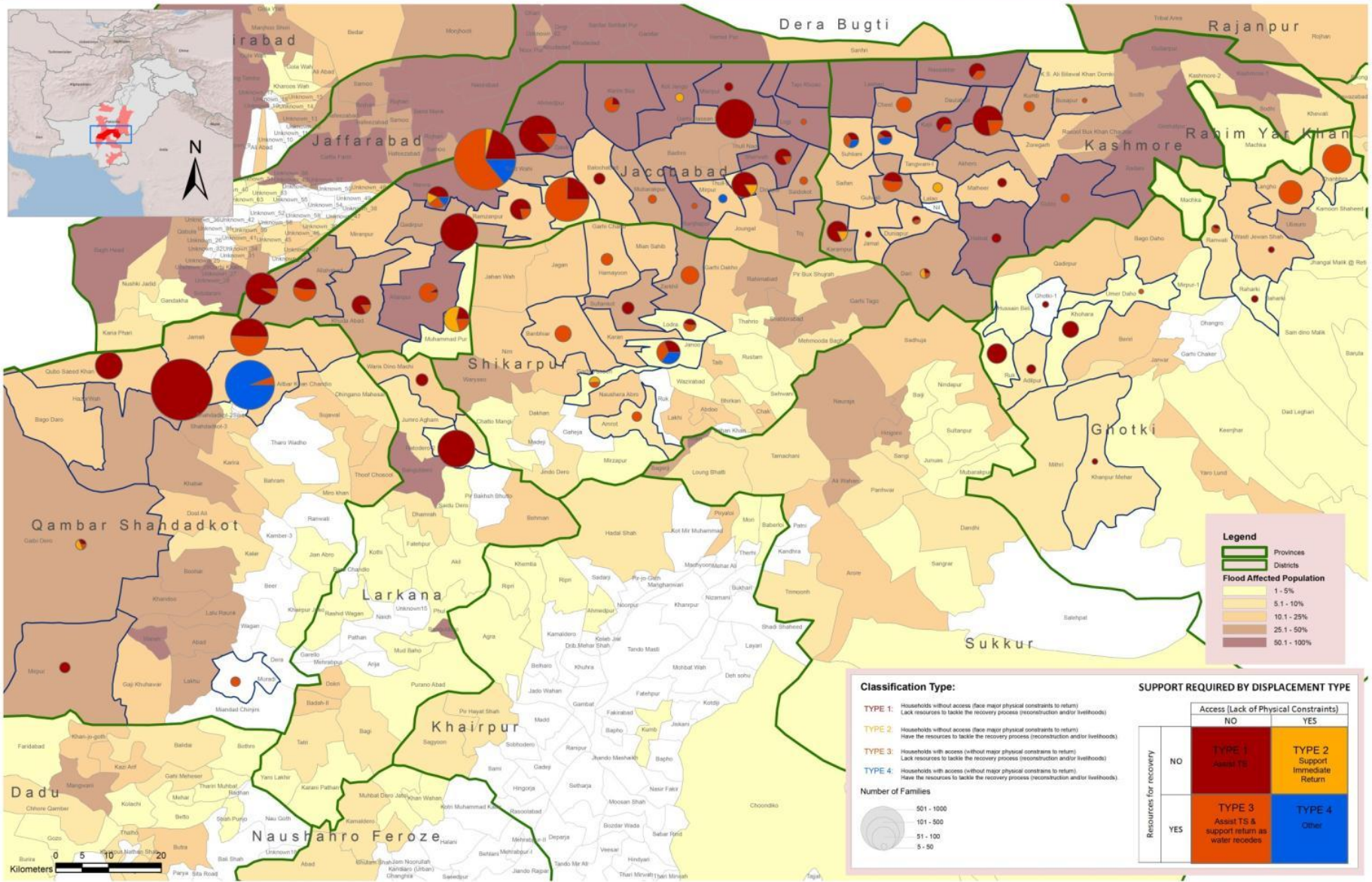




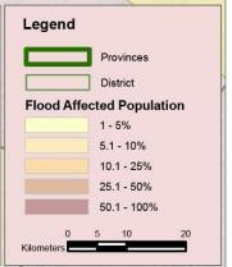
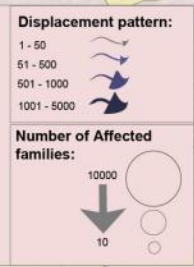
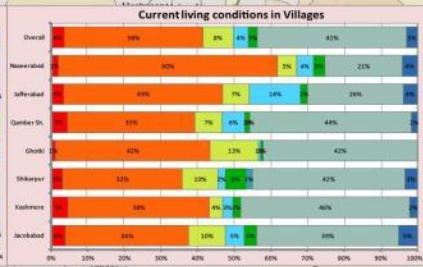
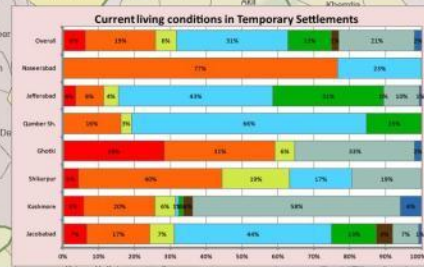
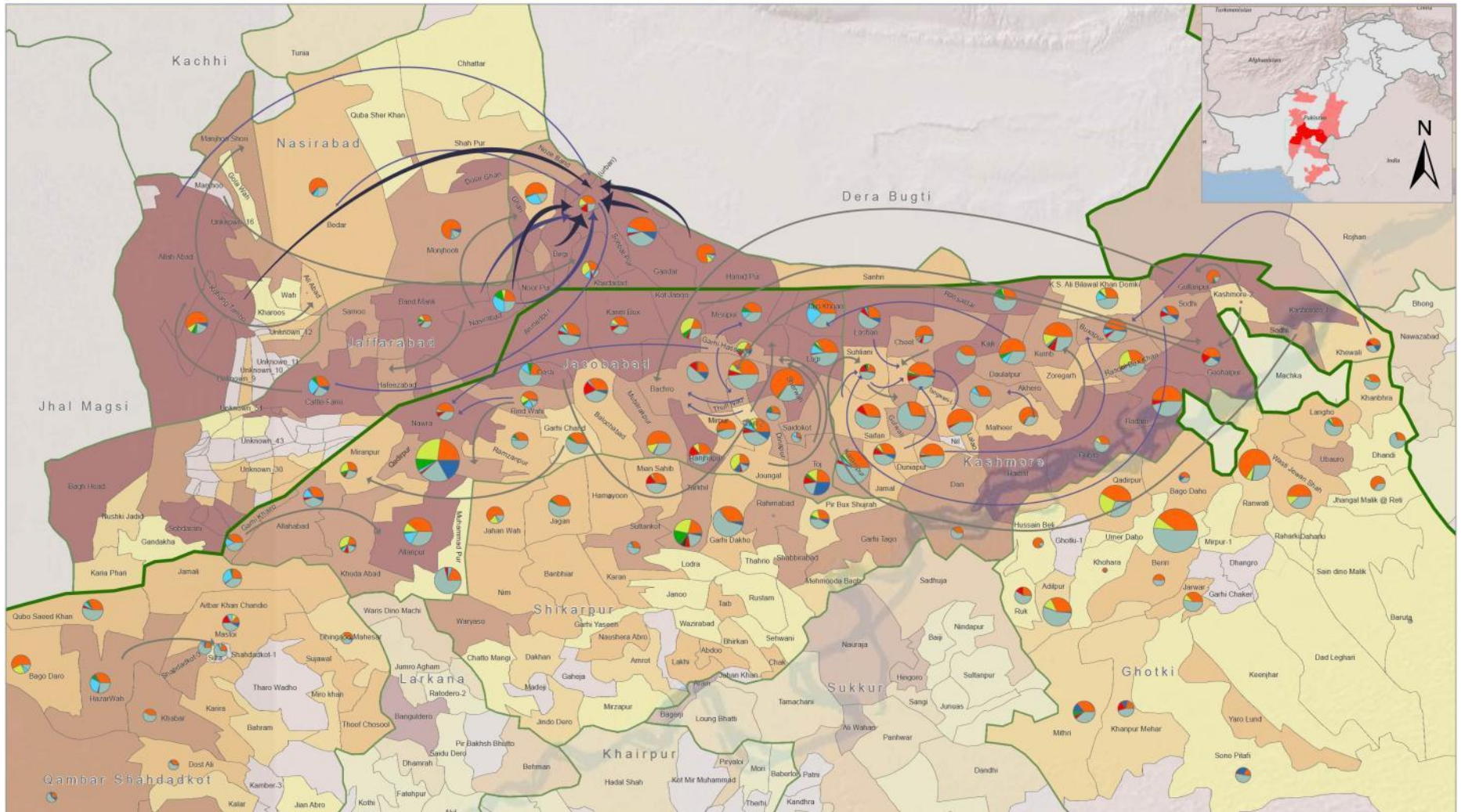


Classification of Families in Temporary Settlements

16th November 2012







TSSU

Challenge

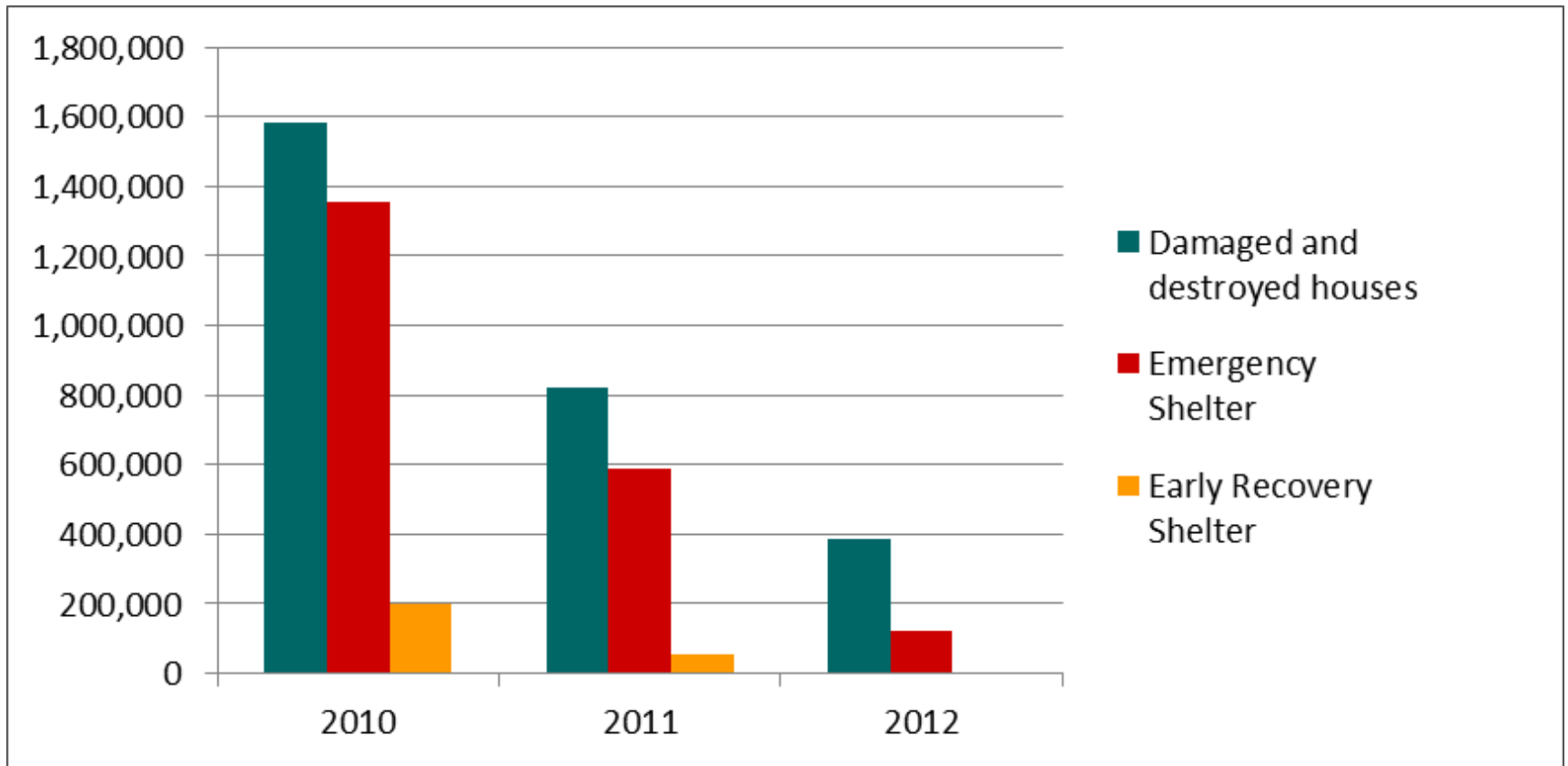
- Identify, monitor the needs and provide assistance to affected population that is not displaced

Way forward/ preparedness

- Evacuation Sites: Assessment and Guidelines

Identification, set up, management and closure of sites

Shelter Response



- Maximize minimum input to expand coverage
- Bridge relief and recovery



EMERGENCY SHELTER KIT: 2 PLACTIC SHEETS, POLES AND ROPE



EMERGENCY SHELTER KIT reused in housing construction

ONE ROOM SHELTER

Beneficiary driven

Catalyze self-help efforts

Maximize minimum input to expand coverage

Flexible approach and different shelter solutions

Assistance tailored to needs and capacities of beneficiaries

Improve resilience of affected population

Knowledge transfer on technical/DRR construction techniques on safer construction and shelter maintenance

Incremental upgrade

Target limited resources to most vulnerable groups

Beneficiary selection criteria

SHELTER IS A PROCESS

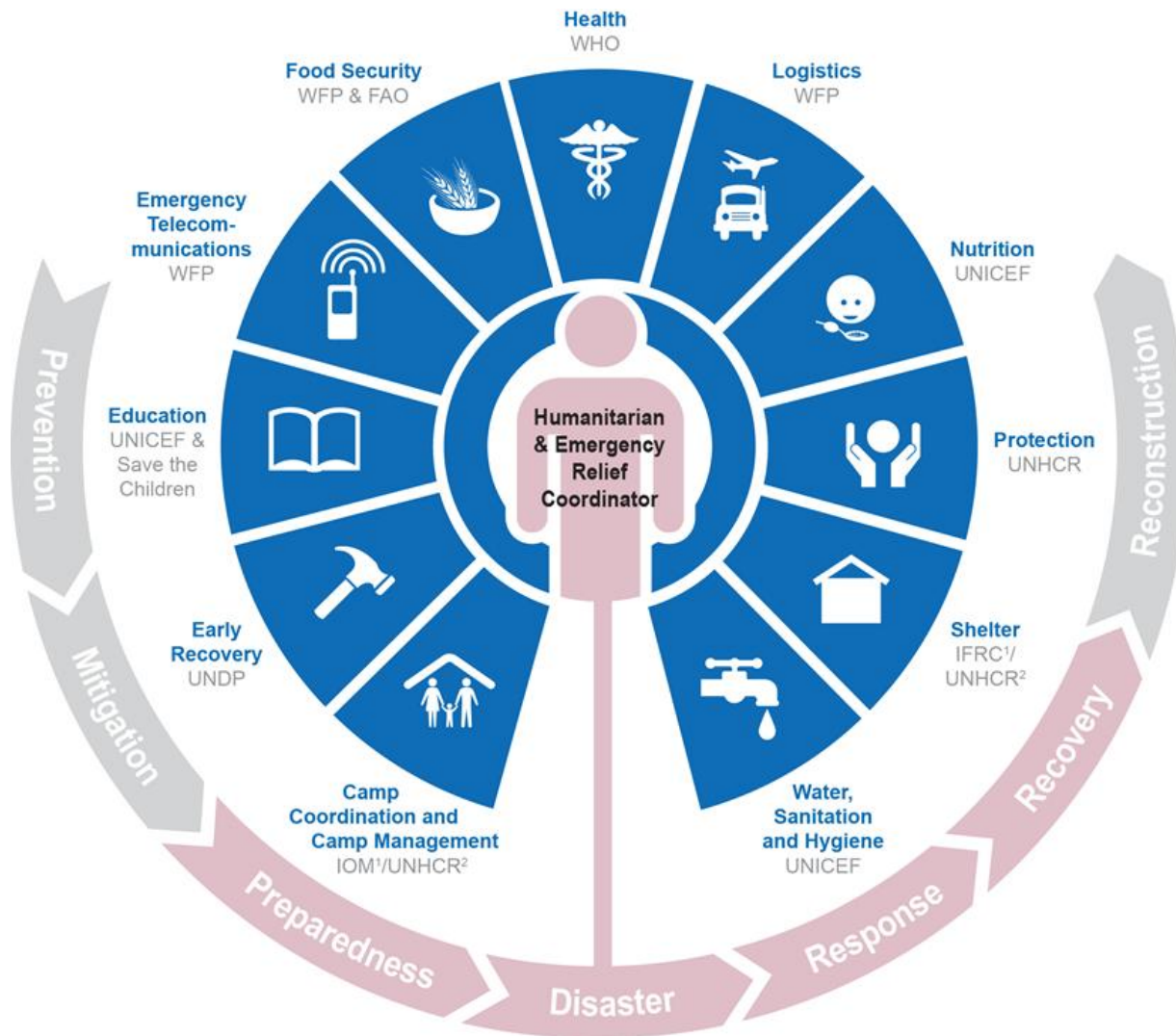




ONE ROOM SHELTER

TRANSITIONAL ROOM SHELTER | SEMI PERMANENT SHELTER

PERMANENT ONE ROOM SHELTER | TRANSITIONAL SHELTER



Time of shelter implementation vs other sectors and IASC guidelines
 Shelter Cluster de-activation

Preparedness

- **RESEARCH:**

- **Improved shelters for Responding to Floods in Pakistan**

This research aims at analyzing the technical, economic, environmental and social benefits and disadvantages of each shelter recovery project design, with the objective of producing a best practice guide for building design in flood-prone regions of Southern Pakistan.

- **SAFER SHELTER TRAINING**

Dissemination of coherent technical guidance to shelter practitioners and affected communities