



Dave Hodgkin
Managing Director



Fabian Prideaux
Project Manager



Miguel López Beraza
Associate Consultant



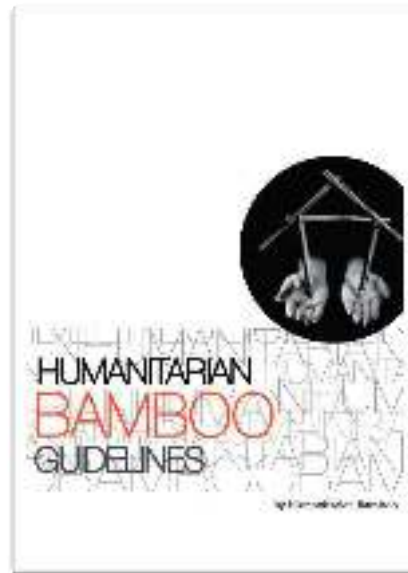
Ana Gató
Associate Consultant



Humanitarian Bamboo Guidelines



2009



2014



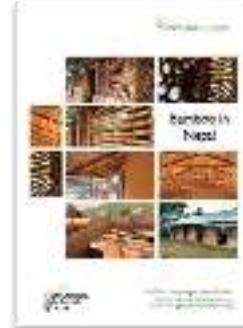
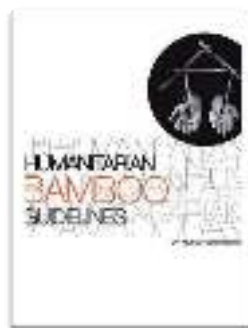
2017

Recent Projects

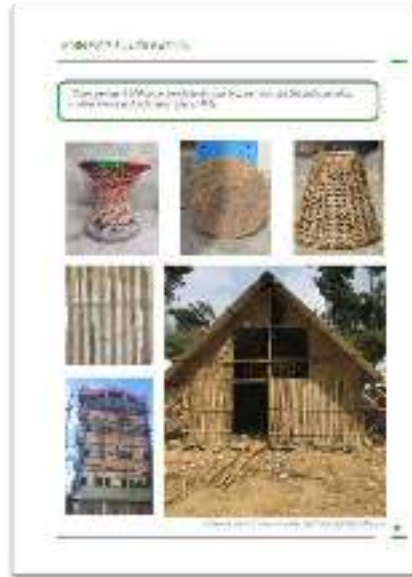
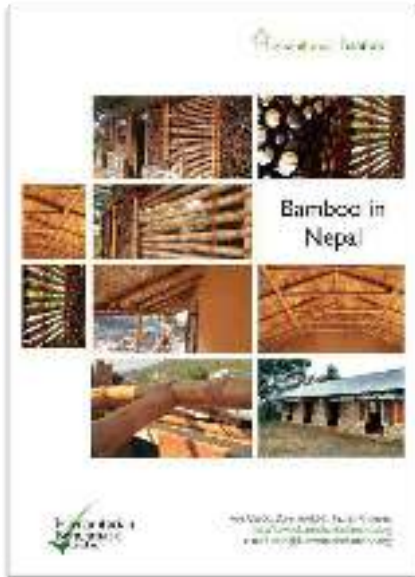


Nepal 2016

Woodford Australia 2016 / 17



Research, Surveys and Program Advice




Guidance Documents

INTRODUCTION TO BAMBOO

Bamboo is a natural material which is strong, light and sustainable. It is a natural building material that can be used in many ways.

PROPERTIES OF BAMBOO

Bamboo is a natural material that is strong, light and sustainable. It is a natural building material that can be used in many ways.



WILD FIRE RESISTANCE

Bamboo is a natural material that is strong, light and sustainable. It is a natural building material that can be used in many ways.

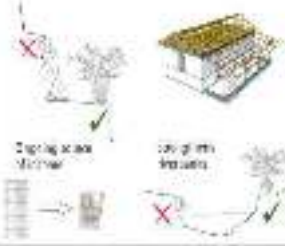
Phone: +66 2 622 1111
Fax: +66 2 622 1112
Email: info@bamboo.com
Website: www.bamboo.com

BENEFITS OF BAMBOO

Why bamboo is a better choice?

- It is strong and light
- It is sustainable
- It is cheap
- It is easy to use
- It is natural
- It is fire resistant
- It is pest resistant
- It is a natural building material


It is a natural building material that can be used in many ways.



Bamboo is a natural building material that can be used in many ways.


WHAT IS BAMBOO?

Bamboo is a natural building material that can be used in many ways.




WHY BAMBOO?

Bamboo is a natural building material that can be used in many ways.




PROPERTIES

Bamboo is a natural building material that can be used in many ways.




CONSTRUCTION

Bamboo is a natural building material that can be used in many ways.




APPLICATIONS

Bamboo is a natural building material that can be used in many ways.



CONCLUSION

Bamboo is a natural building material that can be used in many ways.



CONTACT

Bamboo is a natural building material that can be used in many ways.

Guidance Documents

HARVESTING BAMBOO

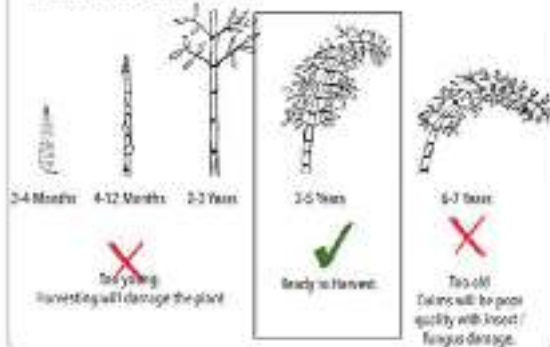
Harvest your plant after the wet season has finished. Know how and when to harvest bamboo culms to ensure your plant remains healthy and productive.

WHEN TO HARVEST

Harvest early morning in the dry season



Harvest 3-5 year old culms.



HOW TO HARVEST

Only ever harvest 1/3 of a clump



Don't harvest more than one third of your bamboo clump at once.

Cut cleanly, well above the ground






Remove old, damaged and infested culms

Shoot Borer moths create recognisable holes above the node. Bamboo culms should be removed to reduce infestation of the clump. Old bamboo (7 years and older) should be removed, along with broken or damaged culms.



Bamboo Workshops

one-day-training
**FACILITATION
GUIDE**

General Bamboo Training :TOT
Monday 09 May 2011




8:30 AM - 9:00 AM Morning tea and registration

<p>Introduction / Big Action Welcome to the day and introduce the facilitator and the subject and provide an overview of the day's agenda and the challenges from registration to the end of the day.</p>	<p>Myth busting / misconceptions Bamboo is not magic, it is not a miracle, it is not a magic plant, it is not a magic plant, it is not a magic plant, it is not a magic plant.</p>	<p>Bamboo demonstration Practical demonstration of bamboo planting techniques and the use of bamboo in various applications.</p>
--	---	---

9:00 AM - 10:00 AM Introduction to bamboo

<p>Theory A: Cultivation, Harvesting & Treatment Introduction to the cultivation, harvesting and treatment of bamboo, including the use of appropriate tools and techniques.</p>	<p>Practice A Practical demonstration of bamboo cultivation and harvesting techniques.</p>
---	---

10:00 AM - 11:00 AM Lunch break

<p>Theory B: Design, Construction & Maintenance Introduction to the design, construction and maintenance of bamboo structures, including the use of appropriate tools and techniques.</p>	<p>Practice B Practical demonstration of bamboo construction and maintenance techniques.</p>
--	---

AFTERNOON TEA / END OF DAY

Participant feedback / How to use the training package

Get feedback on the day and the training package, and provide feedback on the day and the training package.

Get feedback on the day and the training package, and provide feedback on the day and the training package.

Bamboo Workshops

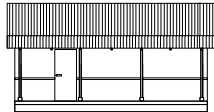
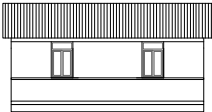
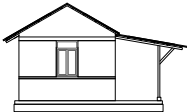
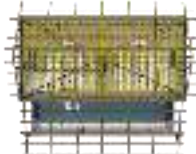


Bamboo Workshops



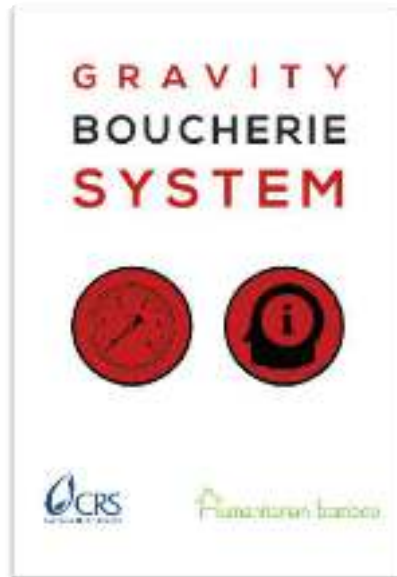
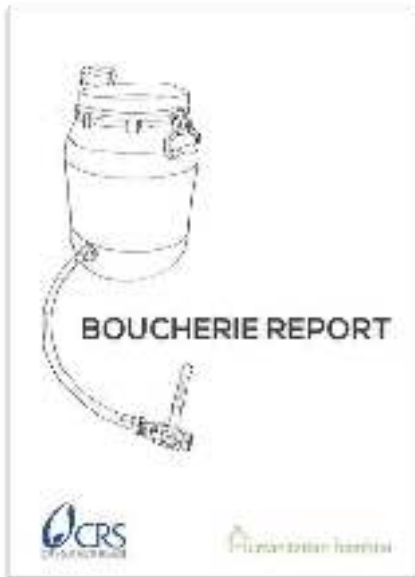
Design Advice

ONE STOREY // VIEWS



Treatment Exploration

- Focused on locally manufactured, low-cost, portable systems
- The gravity boucherie system can be produced for under \$100USD, it can treat 6+ bamboo culms in less than an hour.



Treatment Exploration



Treatment Exploration



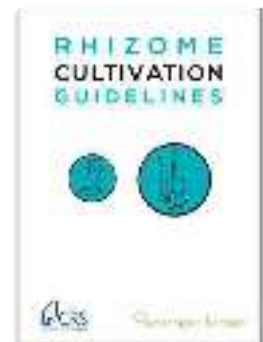
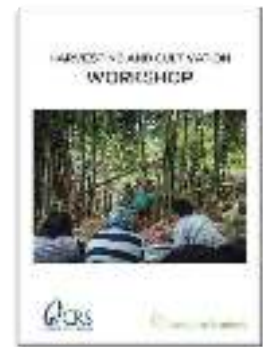
Harvesting and Cultivation

बाँसको पात्रो
उपयुक्त मिति: मोरघा

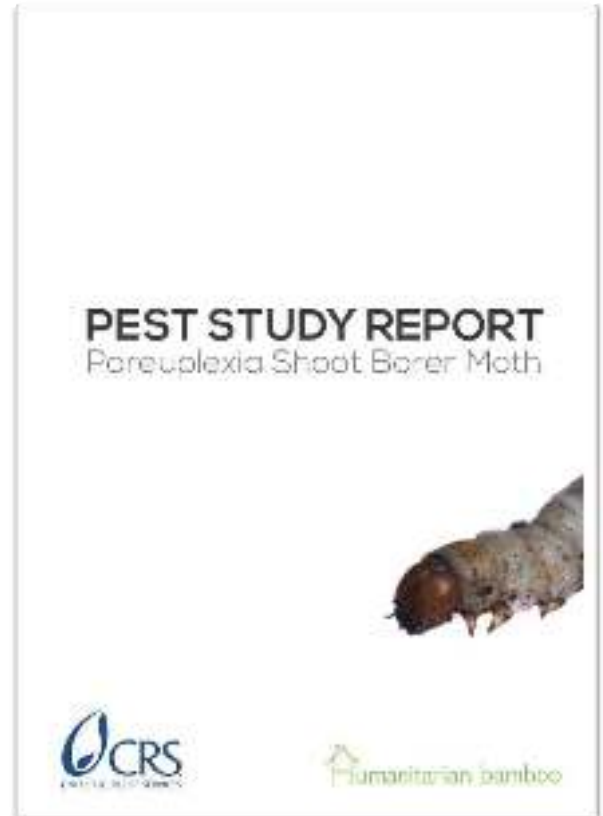
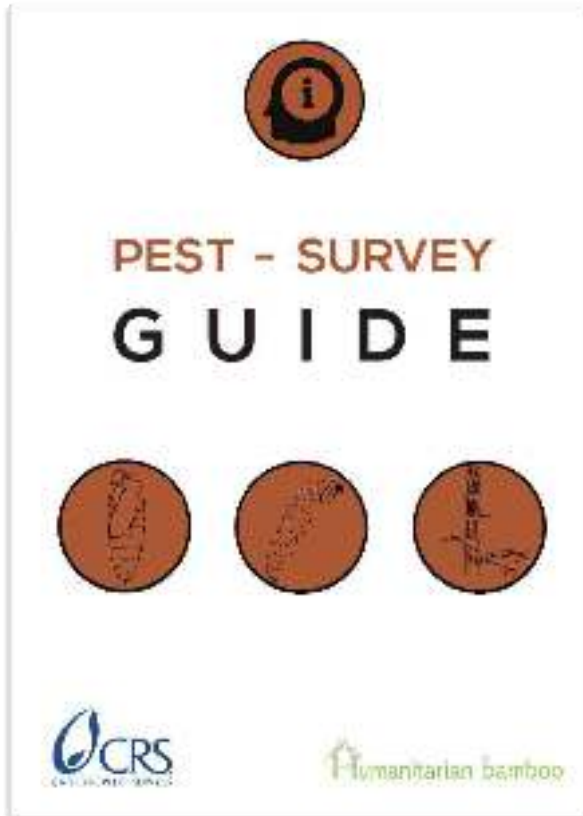
यो तालिका बाँसको पात्रो चिन्तन गर्न मद्दत गर्न मिलाउँछ। यो तालिका बाँसको पात्रो चिन्तन गर्न मद्दत गर्न मिलाउँछ। यो तालिका बाँसको पात्रो चिन्तन गर्न मद्दत गर्न मिलाउँछ।

Humanitarian Bamboo

	प्राथमिक चरण					द्वितीय चरण				तृतीय चरण			
	समय	सामग्री	रिज	रिजको	वेष्ट	आ	उपयुक्त	समय	समय	समय	अन्तिम	अन्तिम	अन्तिम
समय	✓	✓	✓	✓	✓								✓
समय	✓	✓	✓	✓	✓								✓
समय	✓	✓	✓	✓	✓								✓
समय													
समय	✓	✓	✓	✓	✓								✓
समय	✓	✓	✓	✓	✓								✓



Harvesting and Cultivation



Bamboo Guidelines Update

www.humanitarianbamboo.org



Thanks to the generous support of the Happold Foundation, the Humanitarian Bamboo Guidelines are going through a major re-write process. Changes include:

- A user friendly interface directly linked to web content with user generated content and links
- Designed as a training resource for humanitarian agencies with quick references at the start of each chapter
- Rapid assessment tools and checklists for humanitarian and development projects
- Links to open source, low cost bamboo technologies and innovation projects.

Bamboo Guidelines Update



www.humanitarianbamboo.org



We would love your input, please tell us how we can make this resource more useful. Visit www.humanitarianbamboo.org and provide feedback:

- How can we make this a more effective tool for Humanitarian and Development agencies?
- What improvements would you like to see in the new edition of the Humanitarian Bamboo Guidelines?
- When would you be likely to use the Humanitarian Bamboo Guidelines, and how can we make them more accessible?

Bamboo Guidelines Update

www.humanitarianbamboo.org



Help us update the Humanitarian Bamboo Guidelines

HUMANITARIAN
BAMBOO

The Humanitarian Bamboo Guidelines are being updated to ensure they remain useful and relevant for humanitarian and development agencies.

We invite you to be part of our global review panel. Help us understand how you currently use the guidelines, what you would like added, improved or reviewed.

The latest version of the Humanitarian Bamboo Guidelines can be downloaded [HERE](#).

Join the Humanitarian Bamboo Guidelines global review panel *

I would like to be part of the Humanitarian Bamboo Guidelines international review, and agree to receiving emails and surveys as part of this process.

Name *

First

Family Name

Email *

