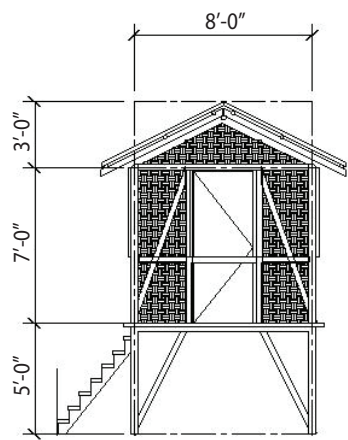
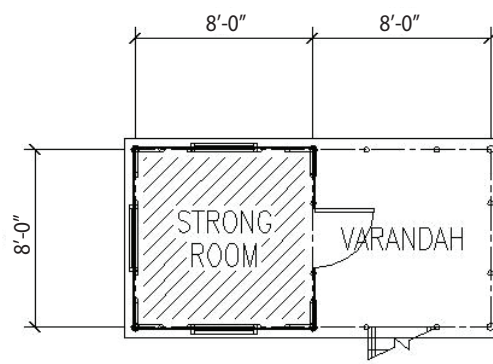


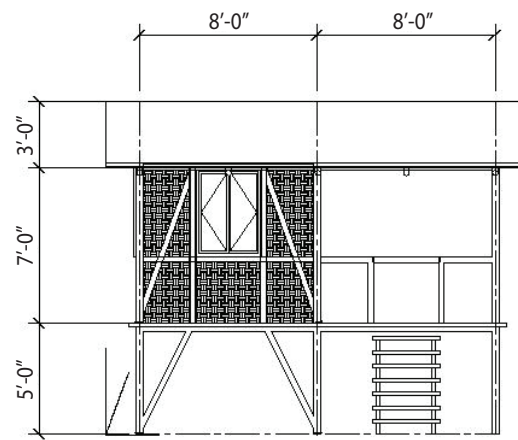
BUILDING BACK SAFER - BAMBOO SHELTER

Configuration

- Bamboo columns and beams
- Light structure
- Recommended for up to 2 story only
- Diagonal bracings are essential
- Minimum size of bamboo post shall be 3"



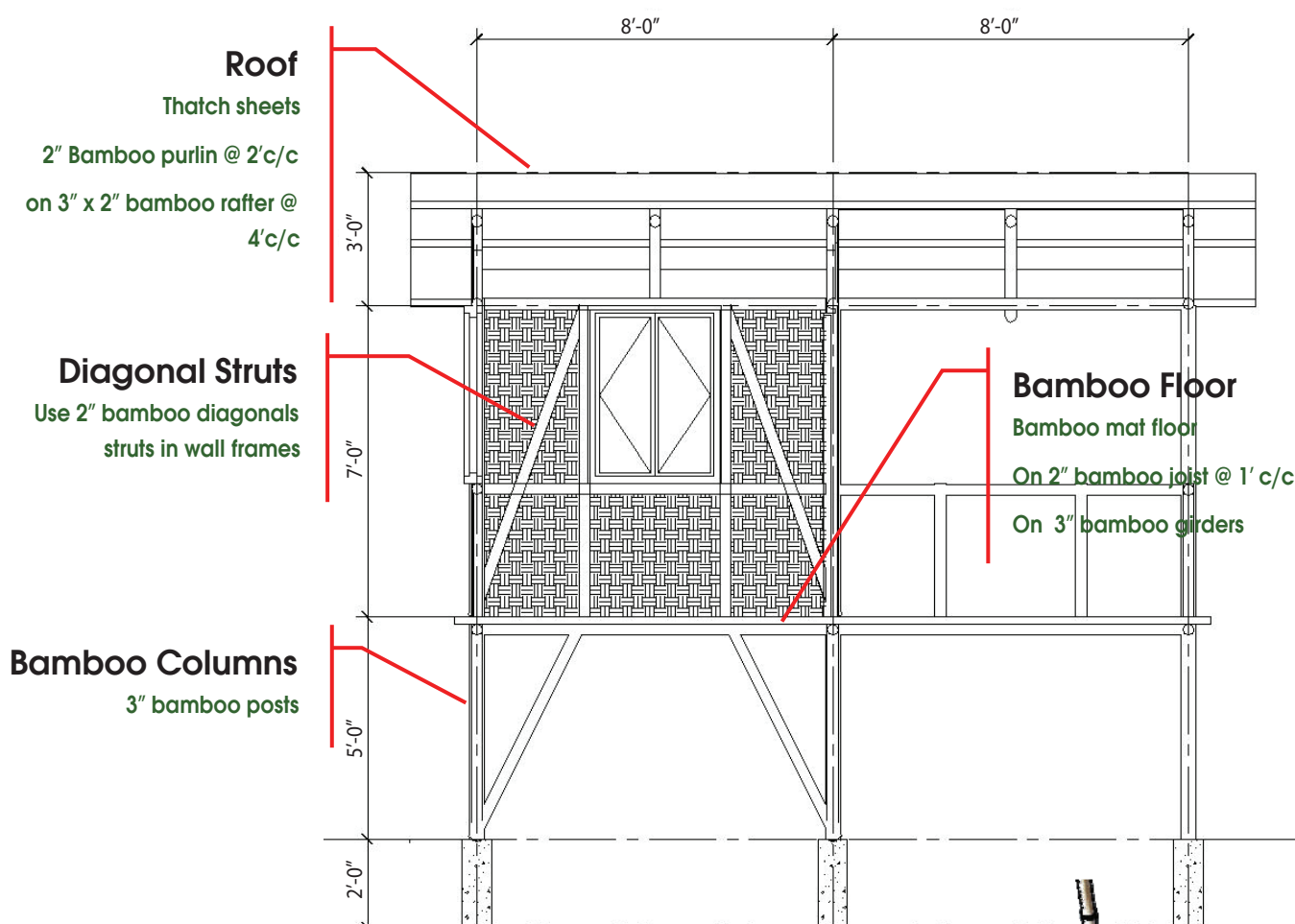
FRONT ELEVATION
1/8" = 1'-0"



SIDE ELEVATION
1/8" = 1'-0"



Construction Details



Roof

Thatch sheets

2" Bamboo purlin @ 2' c/c
on 3" x 2" bamboo rafter @
4' c/c

Diagonal Struts

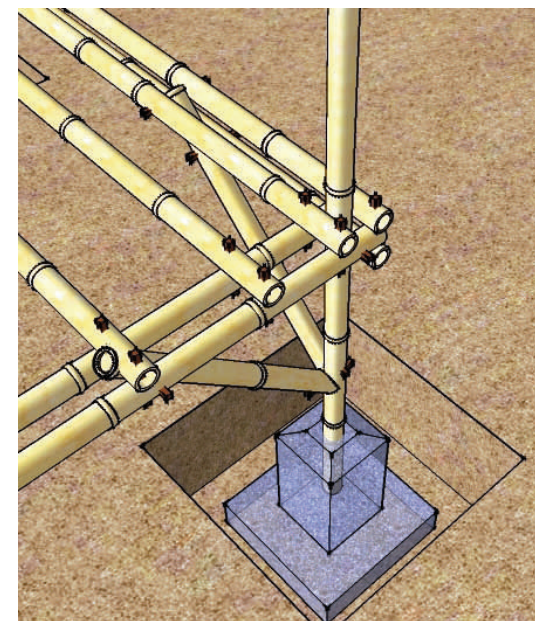
Use 2" bamboo diagonal
struts in wall frames

Bamboo Floor

Bamboo mat floor
On 2" bamboo joist @ 1' c/c
On 3" bamboo girders

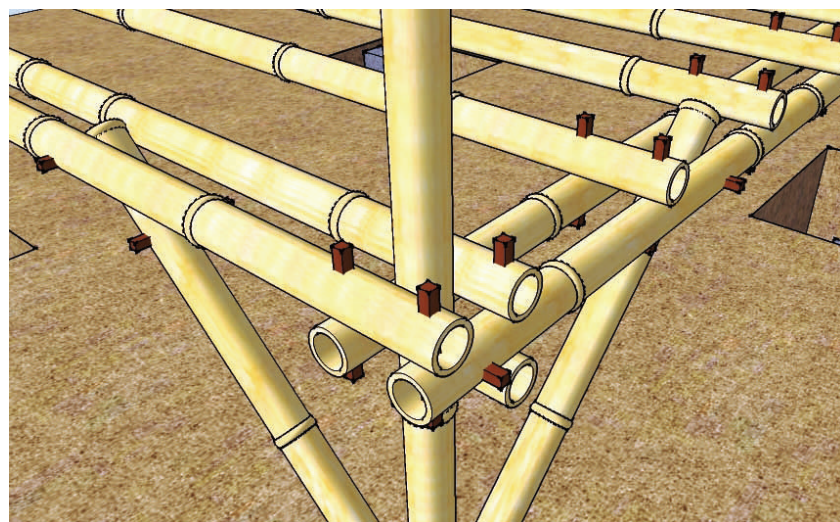
Bamboo Columns

3" bamboo posts



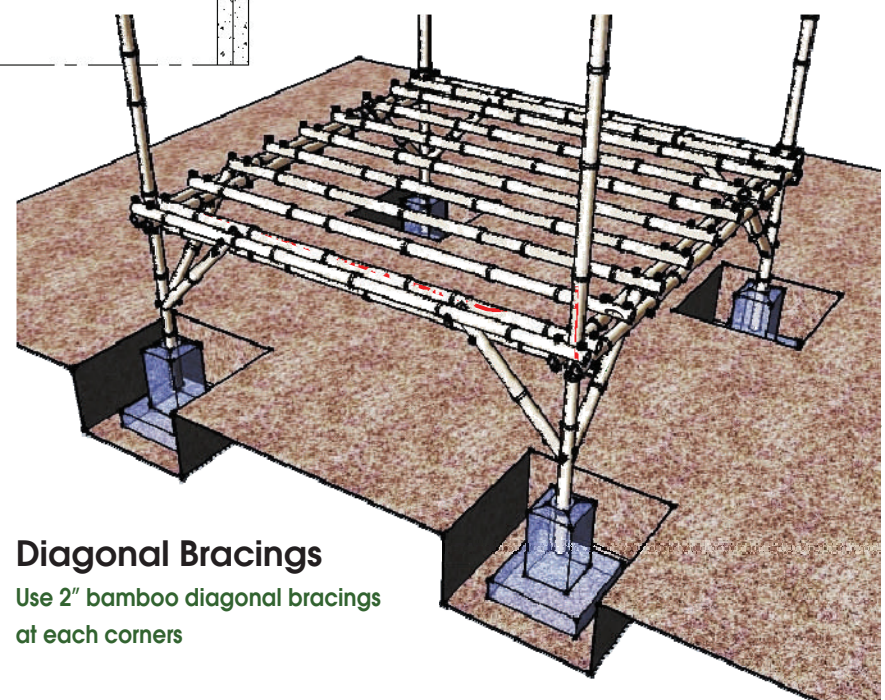
Bamboo post Footing

Bamboo post shall be embedded at least 9"
in the concrete foundation



Bamboo Joints

Use bamboo dowels or nail at each joints and
tie with GI wires.



Diagonal Bracings

Use 2" bamboo diagonal bracings
at each corners