

Type of Project:	<b>Shelter Housing</b>	Country:	<b>Montenegro</b>	
Approach:	<b>Durable Solution Social apartments</b>	Realisation Year:	<b>2004</b>	
Project name:	Refugee/IDP Settlements in Berane I + II and Andrijevica	Version:	1	Date: Dec. 2004



### Initial Situation, Context

Social Housing Programme has been conceived as a durable solution for the refugees coming from Bosnia & Herzegovina and Croatia and IDPs from Kosovo, residing in Montenegro for many years.

The intention of Social Housing Programme is to improve or resolve the problem of a permanent accommodation for refugees and IDPs who decided to integrate into the local community. Finally as well to close as many collective centres as possible. The programme for rehabilitation and maintenance of collective centres has started to scale down significantly during the year 2002, as the use of collective centres had always been conceived only as a temporary solution.

Having taken into consideration all mentioned aspects of the problem, the Government had decided 2002 to provide its support to a programme for improving the difficult situation of the refugee/IDP population.

### Goals, Beneficiaries

- To support to the Government of Montenegro in the closure process for Collective Centres hosting Refugees and IDPs.
- To provide durable housing solutions for Refugees and IDPs out of Collective Centres for their integration into the local society.
- To allocate 10 % of the provided housing assistance to the local vulnerable population in order to support local needs and to compensate the Local Communities for their efforts..
- The goals of the project were firstly to vacate and to close down the collective centres
- The beneficiaries of the programme have been selected from the most vulnerable cases/families currently residing in collective centres.
- The eligibility criteria has been established jointly by the MCDP and UNHCR, who has formed a special commission to work on this issue.

### Approach

- To cooperate with the Commissioner for Displaced Persons of Montenegro (MCDP), UNHCR and Municipality in the identification and realisation of the projects.
- SDC/HA implemented and financed the housing projects following a joint agreement. (Contracted work)
- .The municipality provides the land and acts as the ownership holder of the facilities. Two local social cases from the municipality have been integrated into the project (2 units).
- The beneficiaries signed a tenancy agreement with the municipality, including the rights and obligations of the parties.

**Partner(s)**

- The Montenegrin Commissioner for Displaced Persons (MCDP)
- Government of Montenegro (provide his directs and immediate assistance with local authorities).
- Municipality Berane , Andrijevica and their respective bodies and services (issuing of the necessary project documentation papers and permissions).
- UNHCR
- SDC team was in charge of monitoring and professional technical assistance

**Implementations/Results**

The practical side of the projects implementation consisted in construction of new standard, housing units (39 m2 social housing) on a land plot leased for this purpose from the municipality for a fifteen years period.

- SDC together with other donors supported 36 beneficiary families in Berane I+II and 14 beneficiary families in Andrijevica (app 180 + 65 persons), by construction of new housing units.
- SDC and other donors supported the Government which will now be less burdened in paying maintenance and running costs for collective centers.

**Cost, Financing**

The standard of the units is the standard of social housing settlements in Montenegro

- 8 m2 per persons (net surface)
- 56 units, including 6 units for local social cases,
- total 2,486 m2 (net – including public space)
- 2 floors

Financed by SDC/HA: - 908.000 EUR and UNHCR: 70,000 EUR (17'464 EUR/unit, 362 EUR/m2)

**Problems/Constraints**

- No specific negative aspects for the time being.

**Lessons learned      What was useful in the approach?**

- Good cooperation level between all partners.
- Excellent level of cooperation with the local government and its supporting services.

**Lessons learned      What should be done different next time?**

More careful selection of settlement site.

**Preconditions and Limitations for this approach**

- Unclear legal status and position of refugees and IDPs in Montenegro, lack of National Strategy
- Political acceptance of the projects' goals by national and local political authorities

**Evaluations**

November 2005 by E. Rüegg and H. Herrmann, SDC

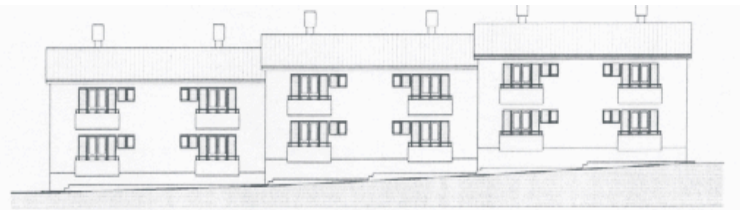
**For further information**

<b>Recommended Contacts:</b>	Urs Rudolf, Project Leader, SDC/HA
<b>Recommended Institutions:</b>	SDC/SHA, desk Europe +CIS
<b>Recommended books/reports:</b>	SDC/SHA Fact Sheet June 2002: "The Swiss Contribution"
<b>Relevant other projects (links):</b>	Similar projects in Serbia/Kosovo

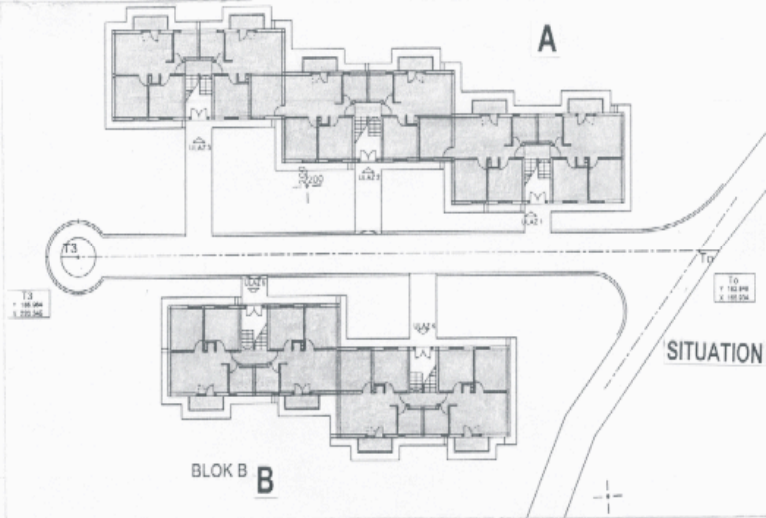
**Annex:** (technical drawings, schemata) see page: 3-4

THE REPUBLIC OF MONTENEGRO  
MUNICIPALITY OF BERANE

SETTLEMENT FOR REFUGEES AND INTERNALLY DISPLACED PERSONS



A FACADE



B FACADE



