

Type of Project:	Shelter Housing Durable Solution	Country:	Kosovo	
Approach:	Contracted works	Realisation Year:	2003	
Project name: Duso - Garibaldi (Decan)		Version:	1	Date: 2004



Initial Situation, Context

In December 2002 the Ministry of Environment and Spatial Planning (MESP) launched a Project Idea for a joint program to support IDP's in the Decan and Skenderaj regions. But during our visit in Garibaldi camp we found still 33 families living there, left behind in a camping situation. Out of these families 7 of them got houses from the NGO CORDAID, 3 of them didn't have plots (so they need to move into a social house) and for the remaining 26 families, they were plots but they had no means to build their houses. On the other side SDC had already a fond of 200'000 Euros allocated for social housing in Decan and Skenderaj for the joint program with the MESP and the relevant Municipalities. SHA shelter office in Pristina made a request and obtained a credit of 500'000 CHF from SDC Bern under the condition of closing down the TCS Garibaldi..

Goals, Beneficiaries

The goal of the project is to reduce the number of vulnerable people living in TCS or in any other difficult conditions; and to close the TCS Garibaldi. Beneficiaries were 26 families from the TCS Garibaldi.

Approach

Construction of 26 new houses, category V. executed by contractor
The work was done in parallel with the SDC joint program (so-called Social Housing) with MESP

Partner(s)

The following partners participated in this programme:

- FOR, for the financing of the project.
- The Ministry of Environment and Spatial Planning
- The Directorate of Reconstruction, Deçan.
- The Manager of Garibaldi Camp.
- The contractor Jeta and Bashkimi for the execution of the project.

Implementation/Results:

All the 26 houses are complete and 24 of them occupied by the families (dec. 2004).

Constructions:

The construction is traditional with bricks and concrete horizontal and vertical beams and pillars, with thermo-insulated on the ceiling, wooden roof structure with Hydro isolation and covered with clay tiles. Wooden windows with thermo pan glass. The floors are covered with wooden boards. The walls are plastered. The water and sewerage network is distributed only inside the houses. The electricity network is build as well as the distribution box.

Cost, Financing

Financed by FOR.

Total cost: € 334'261.50).

Average cost per house : € 12'847.- Average cost per m2 : € 178.-

Problems/Constraints

In general there were no problems on this project, except some delays because of the raining weather. The work started on July and was finished in October. We had complains from some beneficiaries because there was nothing done for the toilets except water distribution and sewerage. Due to that, two families didn't sign the certificate of completion. In one house we had damages from humidity and we had to do some repairs and improvements. Not plastered facades will in long run be a reason for damages.

The fact that some beneficiaries from the camp were included in an other project (social housing) limited our capacity to close the camp at the end of this project.

Lessons learned What was useful in the approach?

We had a good cooperation with the municipal authorities.

Lessons learned What should be done different next time?

Better involvement of the beneficiaries in defining the housing standards for their homes. Better site supervision, having in mind the limitation of further maintenance.

Preconditions and Limitations for this approach

- The first precondition was the request from SDC Bern for closing the TCS Garibaldi.
- Close Cooperation with local Authorities. (Reconstruction, Cadastre, Urbanism, etc.)
- Construction Office with administrative and technical capacity to implement the project.

Evaluations

The evaluations for the housing programme took place in 2005

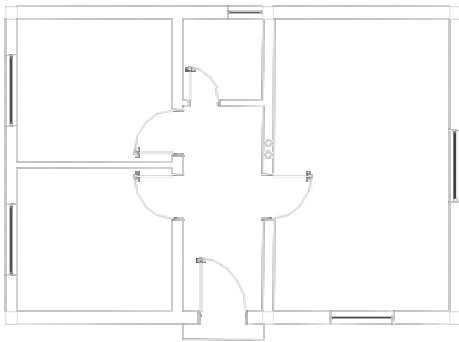
For further information

Recommended Contacts:	Coof Pristina
Recommended Institutions:	SDC/SHA, desk Europe +CIS
Recommended books/reports:	SDC/SHA Fact Sheet June 2002: "The Swiss Contribution"
Relevant other projects (links):	Similar SDC/SHA Projects in Kosovo/Serbia-Montenegro/Bosnia

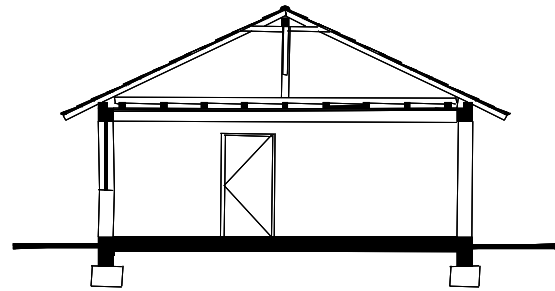
Annex: (technical drawings, schemata) see page: 3

Plan of the project (Type 65m²)

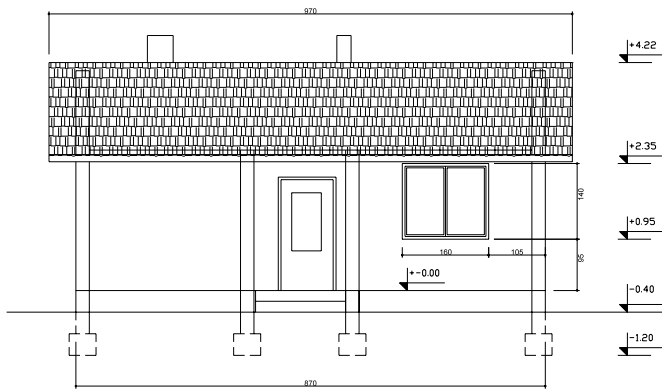
Ground floor



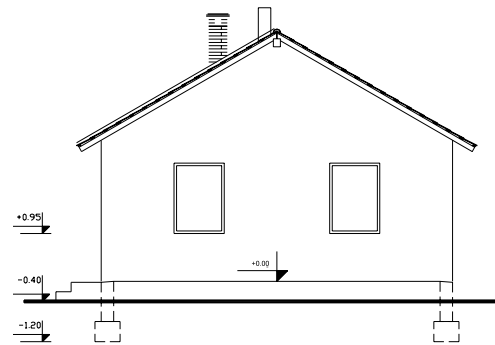
Ground floor plan.



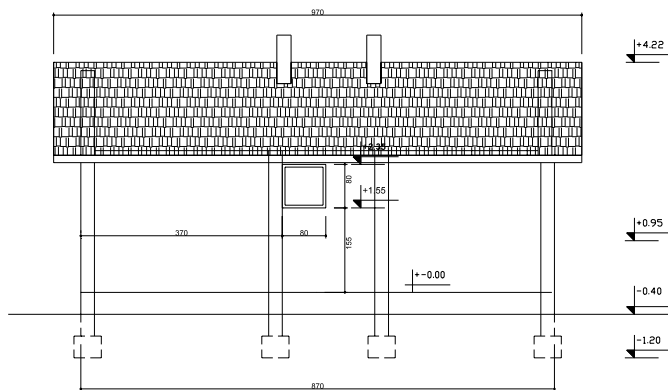
Typical section



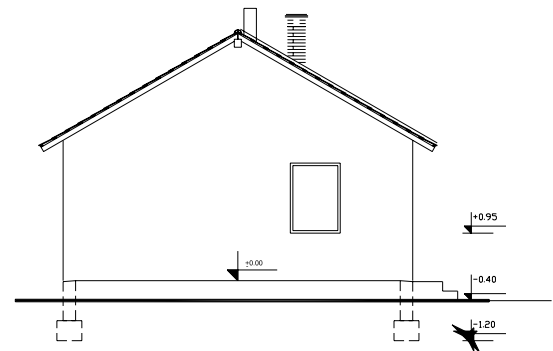
Entrance façade.



Side façade 1



Back façade.



Side façade 2