

1. LOGISTICS CLUSTER

The Cluster Approach was endorsed by the Inter Agency Standing Committee (IASC) in Sept. '05. The IASC, in its own words, is "the primary mechanism for inter agency coordination of humanitarian assistance. It is a unique forum involving key UN and non-UN humanitarian partners". <http://www.humanitarianinfo.org/iasc/>

The IASC committee is chaired by the Emergency Relief Coordinator (ERC), Sir John Holmes. The full members are the heads of the UN humanitarian agencies, standing invitees include OHCHR, World Bank, IOM, ICRC, IFRC, Inter-Action, ICVA (represented by World Vision International) and the Steering Committee for Humanitarian Response (represented by Oxfam).

Nine Clusters were agreed with a lead agency for each. WFP is the lead agency for Logistics Cluster.

The global cluster leads are "accountable to the Emergency Relief Coordinator for ensuring predictable and effective inter-agency preparedness and response within the concerned areas of activity". This entails the very important element of accountability and where necessary the lead agency becomes the provider of last resort.

Clusters can be activated in response to "sudden major new emergency requiring a multi sectoral response with the participation of a wide range of humanitarian actors" as well as during ongoing emergencies.

Logistics cluster operations vary in scale from information sharing/coordination (such as infrastructure assessment, port & corridor coordination, transporters & rates, customs, equipment supplier information) to those involving information sharing and common air, ocean and overland transport, storage etc. Regular coordination meetings will be established involving all stakeholder (UN agencies, Government, International and local NGOs).

Where there are gaps such as lack of transport capacity the first option will be for organisations to help each other with capacity. Where this is not possible the logistics cluster lead will be required to act as a provider of last resort.

Since the instigation of the Cluster approach in 2005, the Logistics Cluster services in Mozambique have been activated twice in 2007 and 2008 in response to the flooding in the Zambezi river basin. In these instances, the Logistics Cluster provided the humanitarian community with common services for storage, air, land and river transport, information management and coordination.

At present there are 27 members who participate in the Logistics Cluster meetings in Mozambique. In 2009 and 2010 the focus of the Logistics Cluster has been emergency preparedness activities. Namely, it supports and encourages harmonisation of the emergency relief package among the clusters; standardisation of the logistics report formats for coherent and consolidated reporting; establishment of the in-country logistics staff emergency roster from all the participating organisations;

2. INTRODUCTION

2.1. Context:

Mozambique is prone to a wide range of natural disasters, which regularly cause major damage and set back economic growth in the disaster affected areas. Furthermore, and particularly during the initial stages, the natural disasters cause significant human suffering, displacement, loss of property and livelihoods generating humanitarian needs, response to which is beyond the national capacity. Therefore, the international humanitarian community works closely with the national and governmental structures to strengthen national preparedness and humanitarian response.

The Logistics Cluster Contingency and Response Plan for Mozambique 2010-2011 is part of the Inter-Agency HCT Contingency Plan (IACP), which sets the contingency scenarios, coordination mechanisms and the overall strategies for the humanitarian response in support of the National Contingency Plan for the Cyclones and Rainy Season 2010-2011 (NCP) developed by the Government.

2.2. Methodology and Framework:

The Response Plan was developed within the framework of the IACP and the NCP. Reference documents used were Logistics Capacity Assessment of 2010 (LCA), Log Cluster Emergency Preparedness and Response Plan 2009-2010, agency reports (stocks, warehouses, transport, 3-W, etc.) and various other publications and resource websites. Additionally, number of bilateral and group consultations was conducted with individual agencies and clusters in the country. Objective of this document is 1) to identify the gaps in the management and capacity of the logistics during the response to the scenarios defined by the HCT and 2) attempt to address those by offering various products and services to enhance effectiveness and efficiency of the overall humanitarian response. The Response Plan shall be read and used in conjunction with the Mozambique LCA 2010.

2.3. Document Structure:

The document will rank three scenarios as defined by the Humanitarian Country team (HCT) in terms of likelihood and impact. Risk Analysis table will be followed by the description of each scenarios indicating geographic areas, affected population and other aspects of the impact as well as the detailed Response Plan including the gaps, Concept of Operations (ConOps), preparedness measures, work-plan, staffing and budget.

2.4. Risk Analysis:

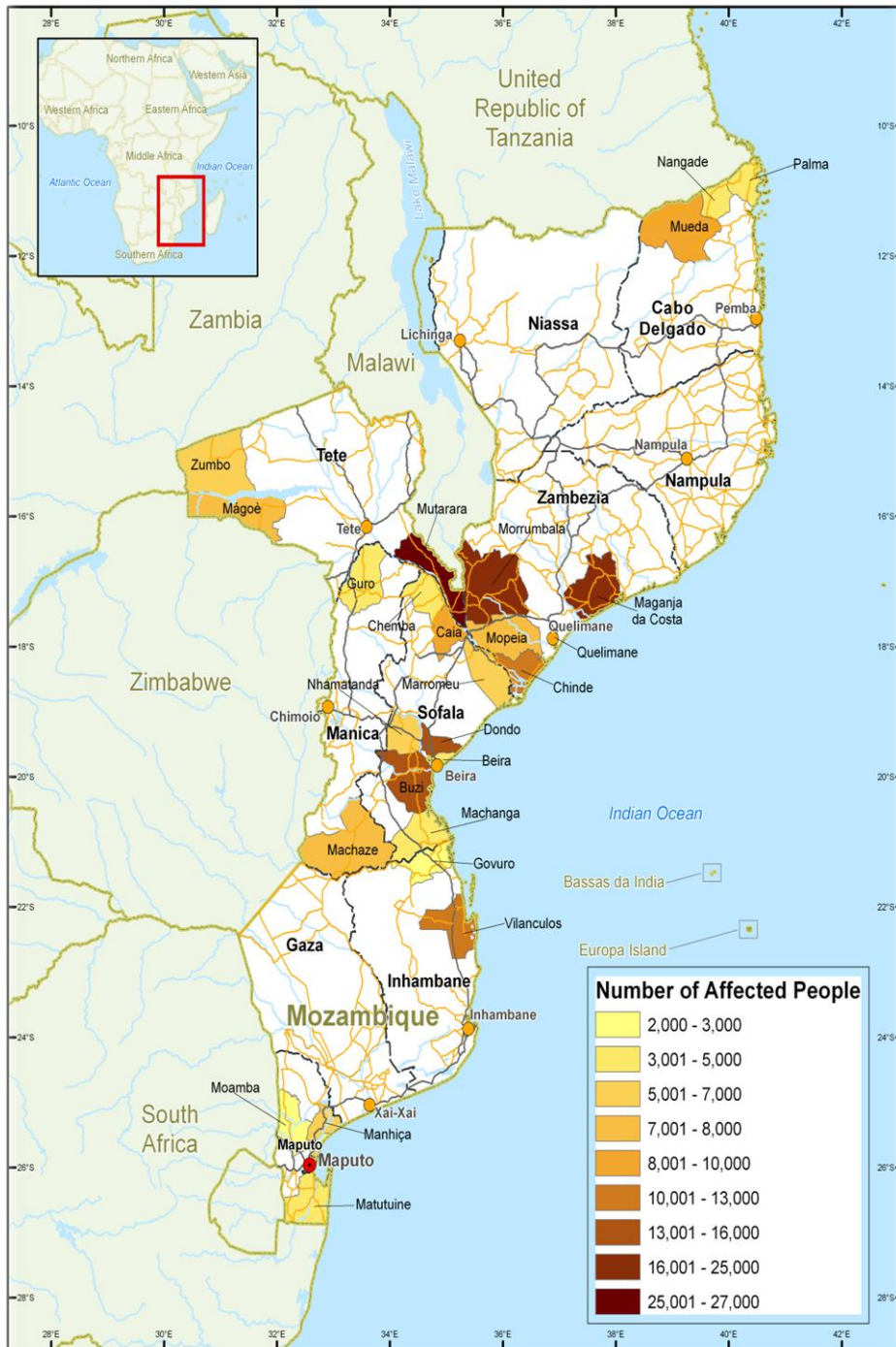
HIGH		SCENARIO 2 Large scale Floods	
MEDIUM		SCENARIO 3 Cyclones	SCENARIO 1 Localized Floods
LOW			
IMPACT Likelihood	Low	Medium	High

3. RESPONSE PLAN

Scenario 1 – Localised floods in Maputo and Zambezi river basins

i. Scenario

- Moderate to high probability of this scenario to happen;
- Trigger the emergency scenario: red alert in one or two provinces;
- The period during which emergency humanitarian assistance may be required is 3 months;



- **Impact:**
 - ✓ Location/area(s) affected: Manhica, Marracuene, Matutuine, Moamba, Govuro, Vilanculos, Beira, Buzi, Caia, Chemba, Machanga, Marromeu, Nhamatanda, Guro, Machaze, Magoe, Zumbo, Mutarara, Chinde, Maganja, Mopeia, Morrumbala, Quelimane, Mueda, Nangade e Palma.
 - ✓ Around 250,000 people may be affected;
 - ✓ Main crop harvest will be damaged;
 - ✓ Roads, bridges, and other infrastructure in the flooded areas may be partially damaged;
 - ✓ Emergency humanitarian assistance in the areas of shelter, water, food, healthcare and sanitation will be required;
 - ✓ Adequate response to the floods will mitigate impacts and households will be able to recover after the recession of floodwaters.

Mozambique Population at Risk Scenario One

Emergency Preparedness and Response Plan 2010 - 2011

● National Capital ● Province Capital Primary Road Secondary Road National boundary Province boundary Surface Waterbody River

Date Created: 10-DEC-2010
 Map From: Logistics_MRC_Coverage
 Core System/Source: Geoprocessing/IGIS/IGIS
 © ICGM

The boundaries and names and the designations used on this map do not imply official endorsement or acceptance by the United Nations.

Sheet: mozambique/01010101
 Scale: 1:1,000,000
 Global Logistics Cluster Report Card, Mozambique

ii. Gaps

During preparation of the present Plan, the organisations indicated that the Scenario 1 (Localised Floods) will not critically affect the main elements of the supply chain necessary to deliver the assistance: most affected areas will continue to be accessible by roads, all means of transport fuel and warehousing will be available and sufficient through commercial/private sector. The Government and humanitarian organisations will have sufficient capacity to handle the logistics part of their response programmes. Provincial, district and smaller administrative centres will be accessible where affected population will be able to come and collect their assistance by pickups, motorcycles, boats or on foot. The same conclusion can be drawn from the analysis of the current logistics capacities reported by the organisations and data from LCA.

However, considering the number of humanitarian actors responding to the crisis, active engagement/leadership role of the Government (INGC) and increased demand on the commercial/private sector, the humanitarian response will require close cooperation and coordination among the actors. Similarly, sharing and the overall management of the logistics information such as market, prices, transport availability and capacities, pipeline information, storage availability and capacities will play a key role in ensuring efficiency and effectiveness of the overall humanitarian response operations. Worth noting that during Scenario 1 humanitarian organisations will be using the same pool of commercial logistical assets and capacities. Therefore, logistics coordination and information management are seen as major gaps during the response.

iii. Concept of Operations (3 months)

The Concept of Operations is designed for the initial 3 months response. The Log Cluster will have one dedicated Coordinator at Maputo level to focus specifically on the facilitation of coordination and information management (IM). Weekly meetings will be conducted to offer a forum and space for the discussions, information sharing and decision-making to the humanitarian community in the country. Based on the organisations inputs and reports, market research and field trips, the Log Cluster will solicit logistics data (prices, rates, capacities, availability, bottlenecks, storage, transport, etc.), compile it, analyse it and offer updated information along with the relevant recommendations and technical advice. Consolidated inter-agency IM products - including maps - will be disseminated on a regular basis to ensure that all involved organisations have access and knowledge of the wider situation affecting the logistics, to aid planning and decision-making in their respective organisations and clusters. Log Cluster will also act as a liaison with the relevant Governmental line ministries/departments, HCT and OCHA to facilitate importation of the humanitarian goods. Finally, the Log Cluster will have an advisory role as well.

iv. Suggested Log Cluster TORs and scope of work

- Coordination:
 - ✓ Offer open space and forum for discussion, information sharing and decision-making to the organisations and cluster logisticians through regular meetings, emails and website;
- Information Management (IM):
 - ✓ Various maps and mapping services;
 - ✓ Consolidated stock reports;
 - ✓ Consolidated pipeline reports;
 - ✓ Consolidated contacts information;
 - ✓ Consolidated logistics capacity reports;
 - ✓ SitReps and situational updates on the access, bottlenecks, duplications, gaps, etc.;
- Liaison:
 - ✓ Develop and maintain relevant contacts/networks in the humanitarian, private and government structures;
 - ✓ Intervene, as necessary and as required, on behalf of the humanitarian community to expedite processes and resolve problems with the Government and among the humanitarian actors;
- Technical and expert advice:
 - ✓ Solicit and offer technical advice and/or recommendation to the humanitarian agencies and the Government, as and when required;

v. Preparedness (Minimum Preparedness Measures)

ACTIVITY	DUE BY	RESPONSIBLE
Suggest and agree on the standardized/synchronized reporting formats with/to all the clusters/organisations; - Stock report format; - Warehouse capacity report format; - Upstream pipeline report format; - Downstream pipeline report format;	15-Dec-10	Dorte and Giorgi WFP/Log Cluster
Identify potential candidates for the deployment of a Log Cluster Coordinator.	15-Dec-10	Dorte and Giorgi WFP/Log Cluster
Collect logistics information from all the clusters/organisations in the uniform formats.	22-Dec-10	Dorte WFP/Log Cluster
Consolidate reports and share with the humanitarian community.	01-Jan-11	Dorte WFP/Log Cluster
Alert GIS unit in Rome on the types of maps to be developed during the crisis.	01-Jan-11	Giorgi WFP/GLCSC
Discuss and agree with the Government the Response Plan details.	22-Dec-10	Dorte WFP/Log Cluster
Update LCA.	Done	
Open Mozambique site on the Log Cluster webpage.	15-Dec-10	Giorgi WFP/GLCSC
Post existing maps, documents and information (preparedness) on the webpage.	01-Jan-11	Giorgi WFP/GLCSC
Finalize/endorse agreement with the Government on the fast-track importation.	01-Jan-11	Dorte WFP/Log Cluster
Advise clusters/organisations the price ranges for the transportation in the private sector.	15-Dec-10	Dorte WFP/Log Cluster
Update organisations and clusters' contact details including logisticians network in the country.	Done	
Identify and list the Government's focal point person at the entry points, customs, finance and foreign affairs ministries to facilitate/fast-track importations.	22-Dec-10	Dorte WFP/Log Cluster
Advise organisations to initiate tenders for the transportation frame agreements.	15-Dec-10	Dorte WFP/Log Cluster
Share Log Cluster Response Plan with the GLCSC	10-Dec-10	Giorgi WFP/GLCSC

vi. Work-Plan (3 months)

ACTIVITY	1st week	2nd week	3rd week	4th week	5th week	6th week	7th week	8th week	9th week	10th week	11th week	12th week
MOBILISATION PHASE												
Request deployment of the Log Cluster Coordinator												
Participate in the joint inter-agency assessment.												
Arrival and induction of the Log Cluster Coordinator												
Familiarize updated Clusters' Response Plans												
Update Log Cluster Response Plan												
Conduct Log Cluster meeting and circulate the minutes												
Draft Flash Appeal inputs												
Update documents on the webpage.												
RESPONSE PHASE												
Update and post/share consolidated log reports												
Develop maps and share them with humanitarian actors.												
Provide SitRep inputs to UNOCHA												
Provide backstopping, liaison and technical advice												
PHASE OUT AND HAND-OVER												

vii. Budget (3 months)

TYPE	ITEM	UNIT	NUMBER OF UNITS	DURATION	UNIT COST US\$	TOTAL COSTS US\$
Staffing	DSA - Log Cluster Coordinator	pers	1	90	225	20,220
Travel	INTERNATIONAL: Log Cluster Coordinator	pers	1	1	3,000	3,000
Travel	LOCAL: Log Cluster Coordinator	days	3	3	250	2,250
Admin support	Supplies for the meeting	meeting	8	3	25	600
Printing contracts	Printing costs	Lumpsum	1	3	450	1,350
						-

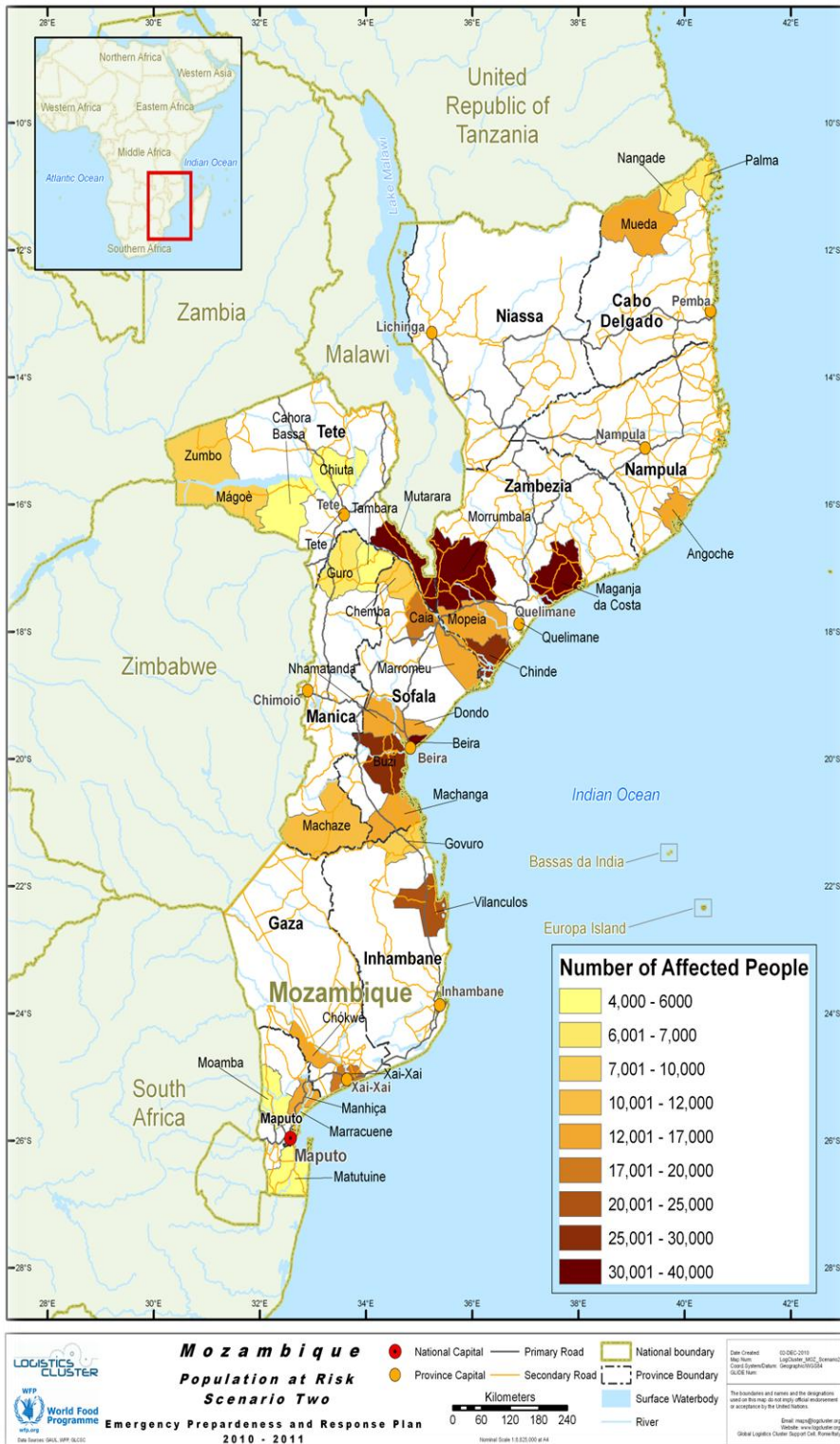
27,420

4. RESPONSE PLAN

Scenario 2 – Extensive floods

i. Scenario

- Medium probability/likelihood of this scenario to happen;
- Trigger the emergency scenario: heavy rainfall in neighbouring countries and in Mozambique followed by opening the upstream dams. The Government declares the national red alert;
- The period during which emergency humanitarian assistance may be required is 3 months.



- **Impact:**
 - ✓ Location/area(s) affected: *Manhica, Marracuene, Matutuine, Moamba, Govuro, Vilanculos, Xai-Xai, Chokwe, Beira, Buzi, Caia, Chemba, Machanga, Marromeu, Nhamatanda, Guro, Tambara, Machaze, Magoe, Zumbo, Cabora-Bassa, Chiuta, Mutarara, Tete, Chinde, Maganja, Mopeia, Morrumbala, Quelimane, Mueda, Nangade e Palma, Angoche;*
 - ✓ Around 500,000 people may be affected;
 - ✓ Crop production will be drastically reduced or totally destroyed;
 - ✓ Roads, bridges, and other infrastructure may be partially or totally destroyed;
 - ✓ Floodwater will endanger human and livestock life;
 - ✓ Large number of people will be displaced and some may require emergency evacuation;
 - ✓ Scarcity of, and lack of access to, short-term basic commodities will push prices up;
 - ✓ Emergency humanitarian assistance in the areas of shelter, water, food, healthcare and sanitation will be required;
 - ✓ Adequate response to the floods will mitigate impacts and households will be able to recover after the recession of floodwaters and continued assistance for few more months;

ii. Gaps

The Scenario 2 (Large scale floods) will critically affect the supply chain necessary to deliver the assistance. Some areas, as indicated on the scenario map, will become inaccessible by road, bridges and other infrastructure will be damaged and unusable. Therefore, the only ways and means of reaching the affected population will be through air by helicopters and on river by boats. Given the very limited capacity and availability of the sufficient air and waterways transport assets in the country (private and/or the Governmental sectors) as well as relatively large quantities/volumes of the relief items that will be required to be airlifted during the first few weeks, the major gaps in responding to the crisis will be unavailability of the adequate air and waterways transport assets to reach the areas inaccessible by road i.e. the most affected locations.

Considering the magnitude of the disaster and the sheer number of the affected population, the immediate response will require sourcing and delivery of large quantities of relief items by up to 50 humanitarian organisations in the country (estimated over 25,000 Mt./65,000m³), which will put immense strain on the private transport sector. Worth noting that currently humanitarian organisations and the government have almost no transport (air, surface or water) and storage capacities of their own to handle such a large amount of commodities. Therefore, it is anticipated that the surface transport and storage will constitute major logistical gaps in responding to the disaster. While it is assumed that the organisations will manage sourcing and transportation of their own relief items up to the hubs in the provinces, onwards transportation to the EDPs and FDPs from the hubs will pose major challenges, and will be beyond the capacity of individual organisations. For planning purposes gaps in surface transport and storage are estimated at 80% of the total requirements i.e. over 19,000 Mt.

It is important to mention that the humanitarian organisations and the Government do not have sufficient levels of emergency stockpiles in the country – estimated stockpile preparedness throughout the country is at 20,000 persons (mostly WASH items only). Therefore, large, if not the majority of the relief items will be sourced and imported from outside the country. Such a rapid inflow of the commodities may overwhelm the customs processing and importation capacity creating bottlenecks and delays at the entry points. During the emergency phase, humanitarian cargos will have to be fast-tracked and the organisations will require precise information on the customs procedures as well as guidance and support.

As in the Response Plan for the Scenario 1 the logistics coordination and information management are seen as major gaps to be addressed during the response to this scenario as well.

iii. Concept of Operations (3 months)

In order to address the gaps mentioned above, the Logs Cluster will be offering common logistics services to the humanitarian community in the country. Namely, storage, air, waterways and road transport (possibly rail from Beira to Tete). Additionally, in each location/hub the Logs Cluster will facilitate overall inter-agency coordination and information management. Importantly, where necessary the Logs Cluster will offer support, guidance and advice on the importation and customs formalities. With this framework, the Logs Cluster will establish the following 5 hubs with various functions and services as described below:

- **Maputo Hub** - customs advice and coordination/IM.
- **Caia Hub** - common services (*air, road, waterways and warehousing*) and coordination/IM.
- **Vilanculos** - common services (*air, transit warehousing*) and coordination/IM.
- **Beira Hub** - common services (*road, waterways, rail and warehousing*), customs advice and coordination/IM.
- **Xai-Xai Hub** - common services (*road, waterways and warehousing*) and coordination/IM.

Warehousing services will be established in two locations: Caia (2000-2400m² = 8 Wiikhals) and Xai-Xai (500-900m² = 2-3 Wiikhals). Additionally, there will be transit warehousing services offered in Beira and Maputo entry points. The common storage services will be offered to the organisations only at the hub level for a short period of time (two weeks), while at the EDP, FDP and distribution sites the organisations will be expected to arrange their own storage. Warehousing hubs will be staffed with dedicated managers and storekeepers, while handling will be provided through contractual arrangements and daily labour. Security will be arranged through the Government

and/or contracted through local security companies. The services will be accessible through Temporary Storage Requisition forms (TSR).

Surface transportation will be offered through contractual arrangements with the commercial companies. Mostly 5-mt and 10-mt trucks will be used to offer surface transport only from the warehousing hubs in Caia (to Sofala, Tete and Zambezia) and Xai-Xai (to Gaza and Inhambane) to the EDPs, FDPs and distribution sites. Organisations will be expected to arrange their own transport from the entry points to the hubs and from some FDPs to the distribution sites. The services will be accessible through Commodity Movement Requisition forms (CMR).

Waterways transport will be offered to the humanitarian community to transport relief goods from the warehousing hubs (Caia and Xai-Xai) and EDPs to the FDPs and distribution sites in those areas inaccessible by road during the initial period. 5-60Mt boats will be contracted through commercial companies. Waterways transport will be provided ex-Caia (to Sofala, Tete and Zambezia), ex-Beira (to Sofala, Manica and Zambezia) and ex-Xai-Xai (to Gaza) hubs. The services will be accessible through CMR forms.

Air transport will only be offered to those selected, most affected areas inaccessible by roads and waterways, only during the initial one month period for top priority, urgent and life-saving items as determined by the HCT. AirOps bases will be established in Caia and Vilanculos airports. Estimated 860 Mt will be airlifted ex-Caia to Tete (Nhangoma, Nhamayabua, Goli-Goli) and Manica (Nhancolo, Nhacafula, Sabandare, Sabeta, Rio Muira) with 2 helicopters of Mi 8MTV / Mi 171 type. Similarly, from Vilanculos estimated 170 Mt will be airlifted to Inhambane (Govuro, Mambone, Rio Save, Njonfane, Matchacame, Mataula) with 1 helicopter of Mi 8MTV / Mi 171 type. The services will be accessible through CMR forms.

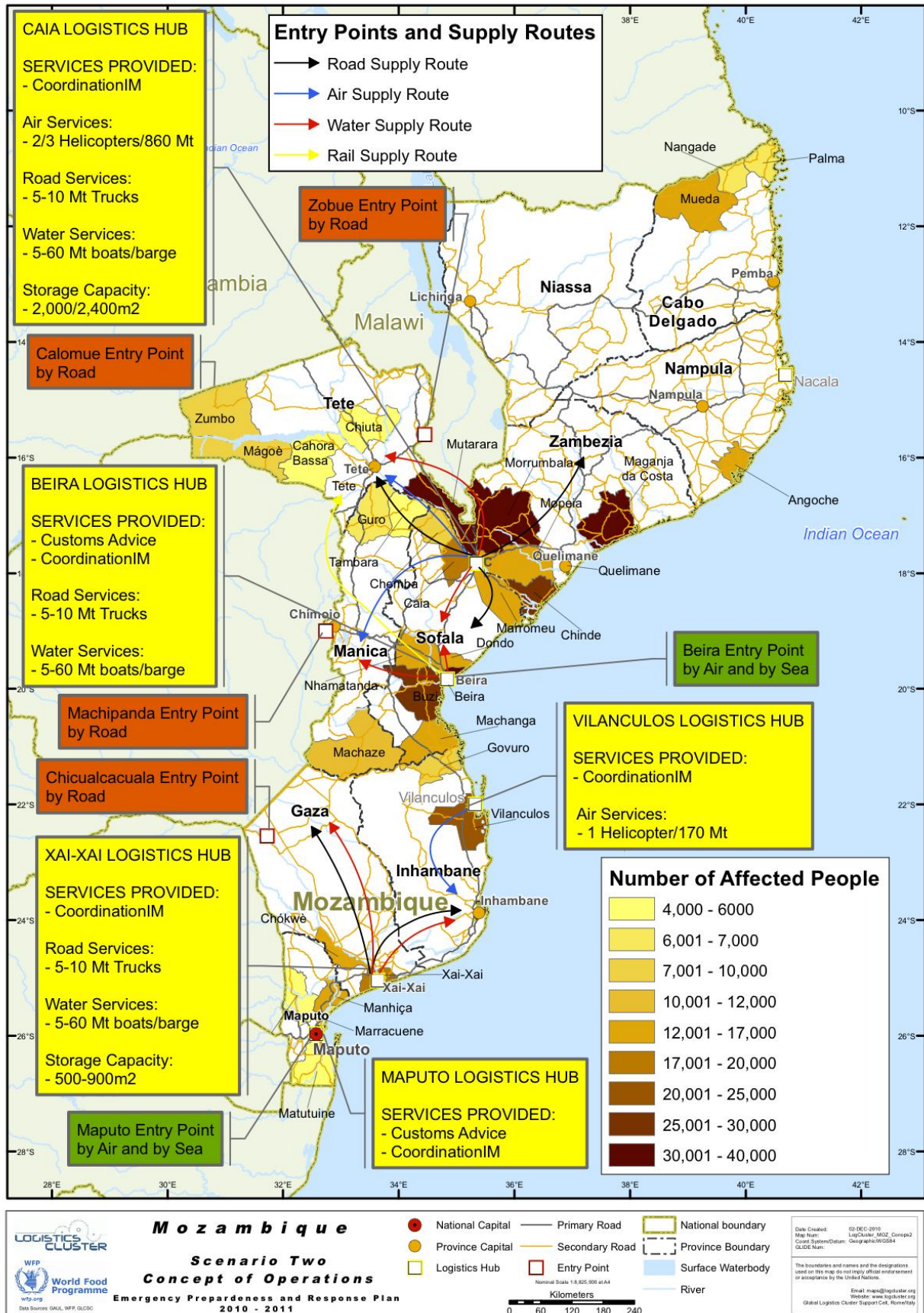
Rail transport may be offered from Beira to Tete locations – pending further research and assessment.

Importation and customs clearance advice and support will be offered to the agencies at the entry points as indicated on the map: Maputo – air, sea; Lebombo – road; Chicualcacuala – road; Machipanda – road; Beira – air and sea; Calomue – road; Zobue – road.

Coordination and Information Management function will be carried out through organisation of the regular Logs Cluster meetings in each hub. At Maputo level the Senior Logs Cluster Coordinator will liaise with high-level government officials, UNHCT and Clusters on policy issues. The Logs Cluster will collect, consolidate, analyse and disseminate information. Some examples of the information products are maps, inter-agency stock reports, pipeline information, customs/importation formalities and procedures, logistics infrastructure and bottleneck assessments, market research and price information.

Common logistics services will be offered to all humanitarian agencies registered with the government and UNOCHA. Agencies and commodities will be prioritized for the common services according to the HCT approved prioritization list.

(see the ConOps map below)



iv. Suggested LC TORs

- Coordination:
 - ✓ Offer open space and forum for discussion, information sharing and decision-making to the organisations and cluster logisticians through regular meetings, emails and website;
- Information Management (IM):
 - ✓ Various maps and mapping services;
 - ✓ Consolidated stock reports;
 - ✓ Consolidated pipeline reports;
 - ✓ Consolidated contacts information;
 - ✓ Consolidated logistics capacity reports;
 - ✓ SitReps and situational updates on the access, bottlenecks, duplications, gaps, etc.;
- Liaison:
 - ✓ Develop and maintain relevant contacts/networks in the humanitarian, private and government structures;
 - ✓ Intervene, as necessary and as required, on behalf of the humanitarian community to expedite processes and resolve problems with the Government and among the humanitarian actors;
- Technical and expert advice:
 - ✓ Solicit and offer technical advice and/or recommendation to the humanitarian agencies and the Government, as and when required;
- Customs advice and support in importation:
 - ✓ Identify key contact persons and maintain communication with the relevant Governmental departments;
 - ✓ Keep customs officials updated on the consolidated upstream pipeline information as appropriate;
 - ✓ Keep humanitarian community updated on the importation and customs procedures, regulations, etc.
 - ✓ As necessary act as a liaison person between organisations and customs;
- Establish and provide common logistics services in the designated locations to the humanitarian community:
 - ✓ Storage and warehousing;
 - ✓ Air transport;
 - ✓ Road transport;
 - ✓ Waterways transport;

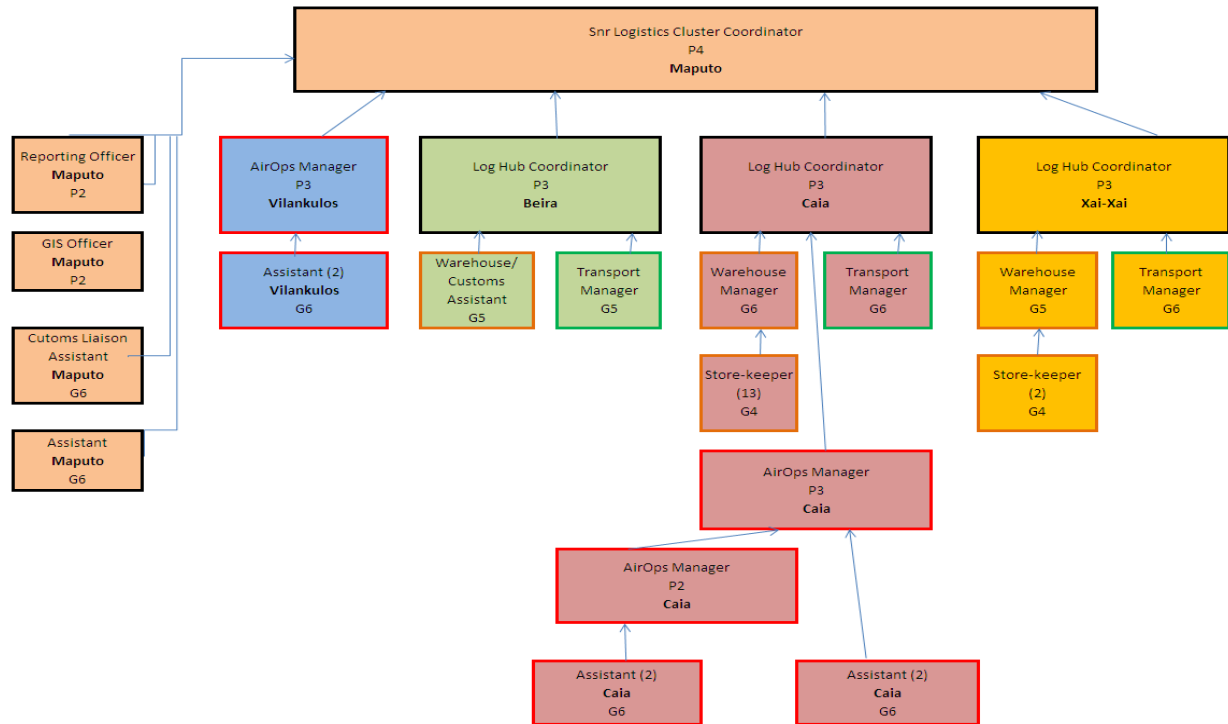
v. Preparedness (Minimum Preparedness Measures)

ACTIVITY	DUE BY	RESPONSIBLE
Share Log Cluster Response Plan with the GLCSC and Aviation in Rome	10-Dec-10	Giorgi WFP/GLCSC
Suggest and agree on the standardized/synchronized reporting formats with/to all the clusters/organisations; - Stock report format; - Warehouse capacity report format; - Upstream pipeline report format; - Downstream pipeline report format;	15-Dec-10	Dorte and Giorgi WFP/Log Cluster
Identify potential candidates for the deployment (ref. Staffing Requirements)	15-Dec-10	Dorte and Giorgi WFP/Log Cluster
Open Mozambique site on the Log Cluster webpage.	15-Dec-10	Giorgi WFP/GLCSC
Advise clusters/organisations the price ranges for the transportation in the private sector.	15-Dec-10	Dorte WFP/Log Cluster
Shortlist transportation companies (road and water).	15-Dec-10	Dorte WFP/Log Cluster
Collect logistics information from all the clusters/organisations in uniform formats.	22-Dec-10	Dorte WFP/Log Cluster
Discuss and agree with the Government the Response Plan details.	22-Dec-10	Dorte WFP/Log Cluster
Identify and list the Government's focal point person at the entry points, customs, finance and foreign affairs ministries to facilitate/fast-track importations.	22-Dec-10	Dorte WFP/Log Cluster
Consolidate reports and share with the humanitarian community.	01-Jan-11	Dorte WFP/Log Cluster
Alert GIS unit in Rome on the types of maps to be developed during the crisis.	01-Jan-11	Giorgi WFP/GLCSC
Post existing maps, documents and information (preparedness) on the webpage.	01-Jan-11	Giorgi WFP/GLCSC
Finalize/endorse agreement with the Government on the fast-track importation.	01-Jan-11	Dorte WFP/Log Cluster
Map number and type of trucks and boats available with the companies in each districts/province.	01-Jan-11	Dorte WFP/Log Cluster
Share Response Plan with clusters and agencies for their comments - update accordingly	01-Jan-11	Dorte WFP/Log Cluster
Together with the Gov agree/identify sites for the erection of the prefab warehouses in each location.	01-Jan-11	Dorte WFP/Log Cluster
Update LCA.	Done	
Update organisations and clusters' contact details including logisticians network in the country.	Done	

vi. Work-Plan

ACTIVITY	1st week	2nd week	3rd week	4th week	5th week	6th week	7th week	8th week	9th week	10th week	11th week	12th week
MOBILISATION PHASE												
Request deployment of staff (ref. Staffing Requirements)	█											
Initiate recruitment of national staff	█											
Participate in the joint inter-agency assessment	█											
Familiarize updated Clusters' Response Plans	█											
Update Log Cluster Response Plan	█											
Conduct Log Cluster meeting and circulate the minutes	█	█	█	█	█	█	█	█	█	█	█	█
Draft Flash Appeal inputs	█											
Formal activation of the Logs Cluster	█											
Arrival and induction of staff	█											
Initiate procurement of the data processing equipment for the Logs Cluster hubs	█											
Initiate procurement/deployment of the prefab warehouses.	█											
Secure offices for the Log Cluster in each hub	█											
Update documents on the webpage.	█											
Brief clusters/agencies on the procedures and forms (common services) - Workshop	█											
Endorse contract with trucking companies	█											
Endorse contract with boat/barge companies	█											
Request/endorse deployment of UNHAS personnel and assets	█											
Erect prefab warehouses and secure the site	█	█										
Train recruited national staff and provide them with necessary forms/equipment	█	█										
RESPONSE PHASE												
Update and post/share consolidated log reports (stocks, storage, pipeline, etc.)		█		█		█		█		█		█
Process TSRs and CMRs		█		█		█		█		█		█
Issue loading instructions to the transport companies, warehouses and UNHAS		█		█		█		█		█		█
Verify invoices and process payments to the suppliers.		█		█		█		█		█		█
Develop maps and share them with humanitarian actors.		█		█		█		█		█		█
Provide SitRep inputs to UNOCHA		█		█		█		█		█		█
Provide backstopping, liaison and technical advice		█		█		█		█		█		█
PHASE OUT AND HAND-OVER												

vii. Staffing Requirements



viii. Budget

TYPE	CATEGORY	ITEM	LOCATION	UNIT	NUMBER OF UNITS	SITE	DURATION	UNIT COST US\$	TOTAL COSTS US\$
Procurement	AirOps	UNHAS contract/agreement	Maputo	assets	3	1	1	1,198,117	3,594,350
Procurement	Coordination	Supplies for the meeting	Maputo	meeting	4	5	3	25	1,500
Procurement	General	Data processing equipment (PCs, laptops, printers, etc.)	Maputo	lumpsum	5	1	1	5,000	25,000
Procurement	General	Printing costs	Maputo	lumpsum	1	1	3	500	1,500
Procurement	General	Stationary	Maputo	lumpsum	1	5	3	300	4,500
Procurement	Road transport	Contracts with the companies (trucks)	Maputo	truck	1,200	2	1	200	480,000
Procurement	Warehousing	Equipment/supplies for the prefab storage	Maputo	wiikhall	8	2	1	3,600	54,000
Procurement	Warehousing	Handling costs (loading/unloading)	Maputo	Mt	8,504	2	1	8	136,056
Procurement	Warehousing	Prefab storage installations	Maputo	wiikhall	8	2	1	570	8,550
Procurement	Warehousing	Prefab storage procurement	Maputo	wiikhall	8	2	1	20,000	300,000
Procurement	Warehousing	Prefab storage clearance transportation and installation	Maputo	wiikhall	8	2	1	286	4,290
Procurement	Warehousing	Security for the warehouses	Maputo	locaiton	8	2	3	1,550	69,750
Procurement	Water transport	Contracts with the companies (boats and barges)	Maputo	mt	226	3	1	100	67,700
Staffing	Air transport	AirOps Assistant - G6 (Caia)	Caia	pers	4	1	1	1,896	7,584
Staffing	Air transport	AirOps Assistant - G6 (Vilankulos)	Vilanculos	pers	2	1	1	1,896	3,792
Staffing	Air transport	DSA - AirOps manager	Caia	pers	2	1	31	88	5,456
Staffing	Air transport	DSA - AirOps manager	Vilanculos	pers	1	1	31	88	2,728
Staffing	Coordination and IM	Assistant - G6	Maputo	pers	1	1	3	1,896	5,688
Staffing	Coordination and IM	DSA - GIS Officer	Maputo	pers	1	1	90	225	20,220
Staffing	Coordination and IM	DSA - Log Hub Coordinator (Beira)	Beira	pers	1	1	90	144	12,960
Staffing	Coordination and IM	DSA - Log Hub Coordinator (Caia)	Caia	pers	1	1	90	88	7,920
Staffing	Coordination and IM	DSA - Log Hub Coordinator (Xai-Xai)	Xai-Xai	pers	1	1	90	88	7,920
Staffing	Coordination and IM	DSA - Reporting Officer	Maputo	pers	1	1	90	225	20,220
Staffing	Coordination and IM	DSA - Snr. Log Cluster Coordinator (Maputo)	Maputo	pers	1	1	90	225	20,220
Staffing	Customs	Customs Liaison Assistant - G6	Maputo	pers	1	1	3	1,896	5,688
Staffing	Customs	Warehouse/Customs Assistant - G5	Beira	pers	1	1	3	1,492	4,476
Staffing	Transport	Transport Manager - G6	Caia	pers	1	1	3	1,896	5,688
Staffing	Transport	Transport Manager - G6	Xai-Xai	pers	1	1	3	1,896	5,688
Staffing	Warehousing	Storekeeper - G4	Caia	pers	13	1	3	1,185	46,215
Staffing	Warehousing	Storekeeper - G4	Xai-Xai	pers	2	1	3	1,185	7,110
Staffing	Warehousing	Transport Manager - G5	Beira	pers	1	1	3	1,492	4,476
Staffing	Warehousing	Warehouse Manager - G6	Caia	pers	1	1	3	1,896	5,688
Staffing	Warehousing	Warehouse Manager - G5	Xai-Xai	pers	1	1	3	1,492	4,476
Travel	General	International	Maputo	pers	9	1	1	3,000	27,000
Travel	General	Local, in country	Maputo	pers	11	1	3	250	8,250
Administration	Admin	Overhead (Flash Appeal)	Maputo	%	7%	1	1	4,986,659	349,066

5,335,725

5. RESPONSE PLAN

Scenario 3 – Cyclone

i. Scenario

- Medium probability/likelihood of this scenario to happen;
- Trigger the emergency scenario: the Government launches the alerts and eventually declares the national red alert;
- The period during which emergency humanitarian assistance may be required is 3 months.



• Impact:

- ✓ Location/area(s) affected: *Inhassoro, Vilanculos, Angoche, Moma, Machaze, Memba, Mongicual;*
- ✓ Around 150,000 people may be affected;
- ✓ Crop production will be drastically reduced or totally destroyed;
- ✓ Roads, bridges, and other infrastructure may be partially or totally destroyed;
- ✓ Number of people will be displaced;
- ✓ Scarcity of, and lack of access to, short-term basic commodities will push prices up;
- ✓ Emergency humanitarian assistance in the areas of shelter, water, food, healthcare and sanitation will be required;

Mozambique Population at Risk Scenario Three

Emergency Preparedness and Response Plan 2010 - 2011

● National Capital ● Province Capital Primary Road Secondary Road National boundary Province Boundary Surface Waterbody River

Date Created: 05-DEC-2010
 Map Name: Logistics_MCC_Scenario3
 Credit System/Custom: Geographic/NGIS4
 SLD/CS/Name:
 This map and its contents are the intellectual property of the Logistics Cluster.
 Email: map@logistics.org
 Website: www.logistics.org
 Global Logistics Cluster Support Cell, Rome/Italy

ii. Gaps

The logistics gaps for the Scenario 3 (Cyclone) response are largely seen as same as for the Scenario 2 above, with the exception of waterways transport. Considering the number of affected population in this scenario, during the first 3 months the humanitarian emergency response will require sourcing and delivery of over 7,000Mt/18,700m³ of relief items. Like in the Scenario 2 Response Plan, for planning purposes gaps in surface transport and storage are estimated at 80% and 35% respectively. More concretely, air transport for the very initial stage to reach the cut off areas, surface transport and storage capacity will pose the main challenges on the Government and humanitarian organisations.

Humanitarian organisations will require guidance and support with importation and customs clearance for the relief items, majority of which will have to be sourced from outside Mozambique. Similarly, logistics coordination and information management will play a key role in ensuring efficiency and effectiveness of the overall humanitarian response.

iii. Concept of Operations (3 months)

In order to address the gaps mentioned above, the Logs Cluster will be offering common logistics services to the humanitarian community in the country. Namely, storage, air and road transport services. Additionally, in each location/hub the Logs Cluster will facilitate overall inter-agency coordination and information management. Importantly, where necessary the Logs Cluster will offer support, guidance and advice on the importation and customs formalities. With this framework, the Logs Cluster will establish the following 4 hubs with various functions and services as described below:

- **Maputo Hub** - customs advice and coordination/IM.
- **Nacala** - common services (*air, road and warehousing*) and coordination/IM.
- **Vilanculos** - common services (*air, road and warehousing*) and coordination/IM.
- **Beira Hub** - customs advice and coordination/IM.

Warehousing services will be established in Nacala (2,000mt/1,280m² – 4 wiikhalls) and in Vilanculos (500mt/320m²). The common storage services will be offered to the organisations only at the hub level for a short period of time (two weeks), while at the EDP, FDP and distribution sites the organisations will be expected to arrange their own storage. Warehousing hubs will be staffed with dedicated managers and storekeepers, while handling will be provided through contractual arrangements and daily labour. Security will be arranged through the Government and/or through local security companies. The services will be accessible through TSR forms.

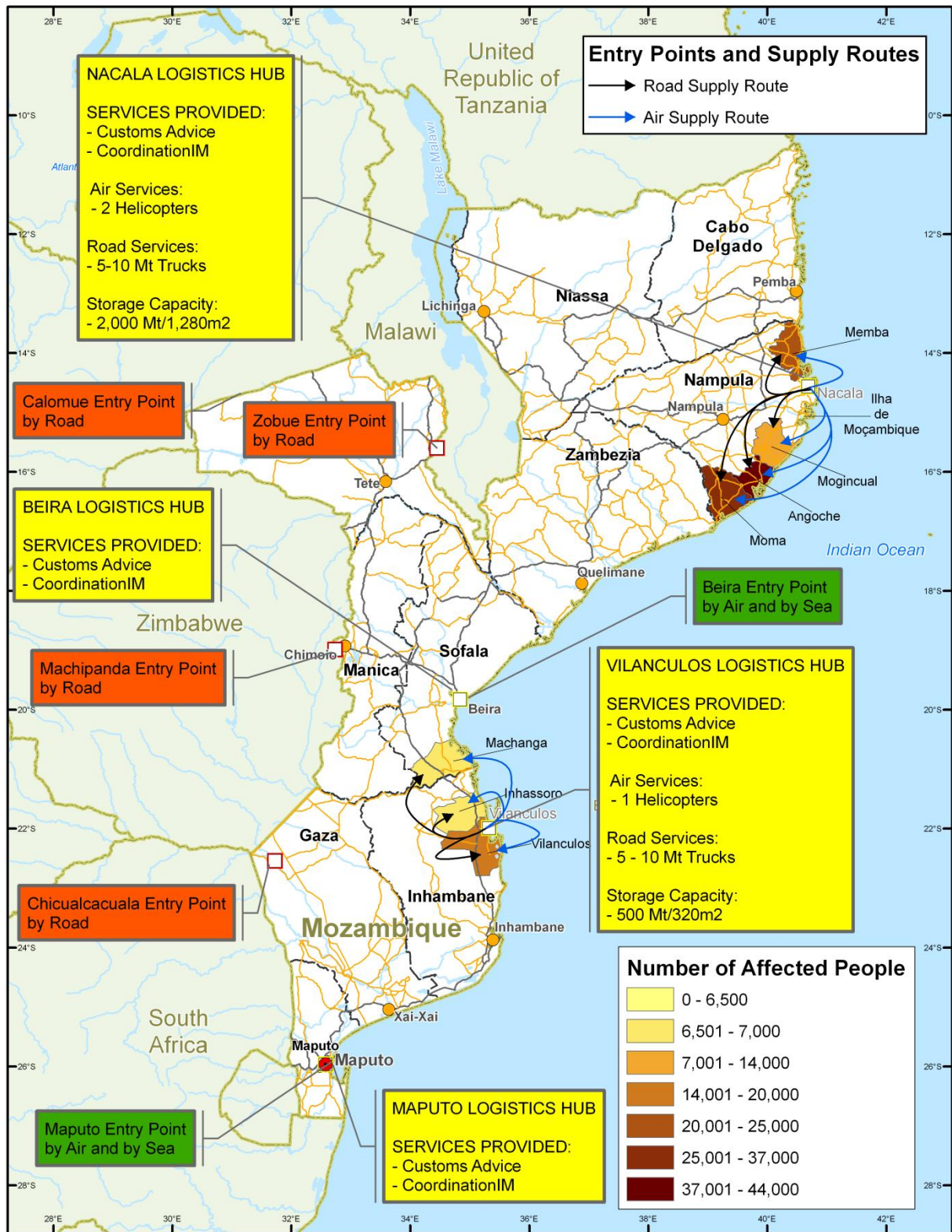
Surface transportation will be offered through contractual arrangements with the commercial companies. Mostly 5-mt and 10-mt trucks will be used to offer surface transport only from the warehousing hubs in Nacala (to Nampula province localities) and Vilanculos (to Sofala and Inhambane localities) to the EDPs, FDPs and distribution sites. Organisations will be expected to arrange their own transport from the entry points to the hubs and from some FDPs to the distribution sites. The services will be accessible through CMR forms.

Air transport will only be offered to those selected, most affected areas (localities) inaccessible by roads, only during the initial one month period for top priority, urgent and life-saving items as determined by the HCT. AirOps bases will be established in Nacala and Vilanculos airports. Estimated 660 Mt will be airlifted ex-Nacala to Nampula in Angoche, Memba, Mogincual, Moma localities with 2 helicopters of Mi 8MTV / Mi 171 type. Similarly, from Vilanculos estimated 180 Mt will be airlifted to Inhambane in Ihassoro and Vilanculos localities with 1 helicopter of Mi 8MTV / Mi 171 type. The services will be accessible through CMR forms.

Importation and customs clearance advice and support will be offered to the agencies at the same entry points as in the Scenario 2 ConOps.

Coordination and Information Management functions will be performed as per Scenario 2 ConOps.

Common logistics services will be offered to all humanitarian agencies registered with the government and UNOCHA. Agencies and commodities will be prioritized for the common services according to the HCT approved prioritization list.



Mozambique Scenario Three Concept of Operations

Emergency Preparedness and Response Plan 2010 - 2011

● National Capital ● Province Capital Logistics Hub
 Primary Road Province Boundary
 Secondary Road Surface Waterbody
 Entry Point River

Date Created: 02 DEC 2010
 Map Name: Logistics_Cluster_Concept3
 Coord System/Datum: GeographicWGS84
 SRS/EPSG: 4326
 The boundaries and names and the designations used on this map do not imply official endorsement or acceptance by the United Nations.
 Email: map@logcluster.org
 Website: www.logcluster.org
 Global Logistics Cluster Support Cell, Rome/Italy

Non-scaled Scale 1:8,225,000 at A4
 0 60 120 180 240 Kilometers

iv. Suggested LC TORs

Same as for the Scenario 2 above.

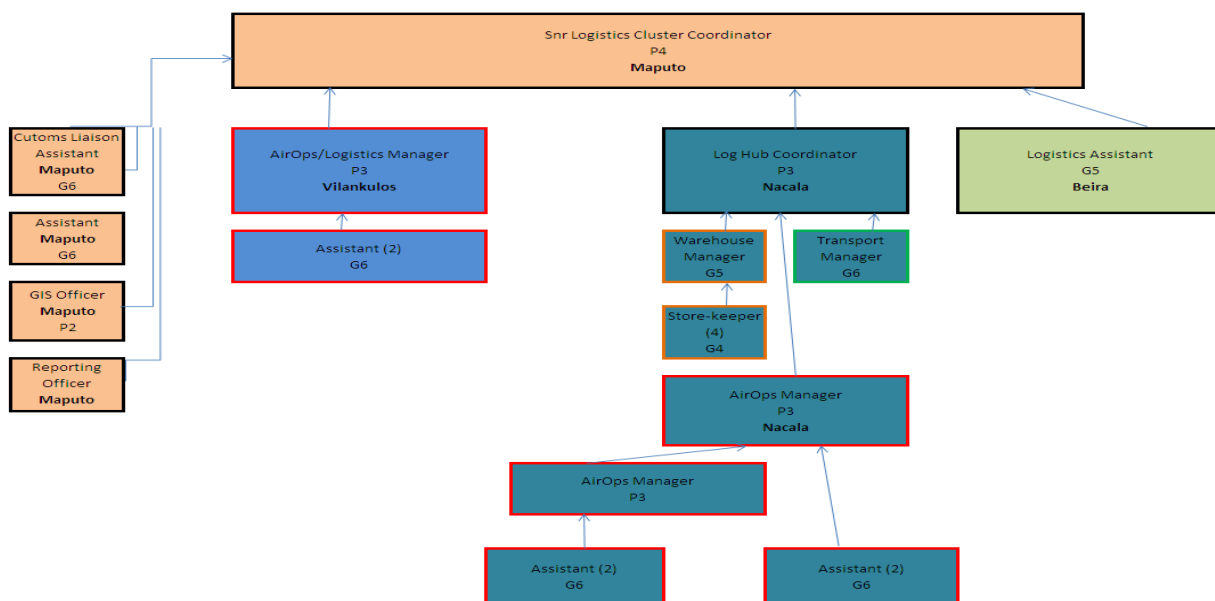
v. Preparedness (Minimum Preparedness Measures)

Same as for the Scenario 2 above.

vi. Work-Plan

Same as for the Scenario 2 above.

vii. Staffing Requirement



viii. Budget

TYPE	CATEGORY	ITEM	LOCATION	UNIT	NUMBER OF UNITS	SITE	DURATION	UNIT COST US\$	TOTAL COSTS US\$
Management	Admin	Overhead	Maputo	%	7%	1	1	4,172,006	292,040
Procurement	AirOps	UNHAS contract/agreement	Maputo	assets	3	1	1	1,198,117	3,594,350
Procurement	Coordination	Supplies (refreshments) for the meeting	Maputo	meeting	4	5	3	25	1,500
Procurement	General	Data processing equipment (PCs, laptops, printers, etc.)	Maputo	lumpsum	3	1	1	5,000	15,000
Procurement	General	Printing costs	Maputo	Lumpsum	1	1	3	500	1,500
Procurement	General	Stationary	Maputo	Lumpsum	1	5	3	300	4,500
Procurement	Road transport	Contracts with the companies (trucks)	Maputo	truck	500	2	1	200	200,000
Procurement	Warehousing	Equipment/supplies for the prefab storage	Maputo	wiikhall	3	2	1	3,600	18,000
Procurement	Warehousing	Handling costs (loading/unloading)	Maputo	Mt	2,900	2	1	8	46,400
Procurement	Warehousing	Prefab storage installations	Maputo	wiikhall	3	2	1	570	2,850
Procurement	Warehousing	Prefab storage procurement	Maputo	wiikhall	3	2	1	20,000	100,000
Procurement	Warehousing	Prefab storage clearance transportation and installation	Maputo	wiikhall	3	2	1	286	1,430
Procurement	Warehousing	Security for the warehouses	Maputo	locaiton	3	2	3	1,550	23,250
Staffing	Air transport	AirOps Assistant - G6	Nacala	pers	4	1	1	1,896	7,584
Staffing	Air transport	AirOps Assistant - G6	Vulankulos	pers	2	1	1	1,896	3,792
Staffing	Air transport	DSA - AirOps manager	Nacala	pers	2	1	31	122	7,564
Staffing	Air transport	DSA - AirOps/Logistics manager	Vulankulos	pers	1	1	31	88	2,728
Staffing	Coordination and IM	Assistant - G6	Maputo	pers	1	1	3	1,896	5,688
Staffing	Coordination and IM	DSA - GIS Officer	Maputo	pers	1	1	90	225	20,220
Staffing	Coordination and IM	DSA - Log Hub Coordinator (Nacala)	Nacala	pers	1	1	90	122	10,980
Staffing	Coordination and IM	DSA - Reporting Officer	Maputo	pers	1	1	90	225	20,220
Staffing	Coordination and IM	DSA - Snr. Log Cluster Coordinator (Maputo)	Maputo	pers	1	1	90	225	20,220
Staffing	Customs	Customs Liaison Assistant - G6	Maputo	pers	1	1	90	225	20,220
Staffing	Customs	Logistics Assistant - G5	Beira	pers	1	1	3	1,492	4,476
Staffing	Transport	Transport Manager - G6	Nacala	pers	1	1	3	1,896	5,688
Staffing	Warehousing	Storekeeper - G4	Nacala	pers	4	1	3	1,185	14,220
Staffing	Warehousing	Warehouse Manager - G5	Nacala	pers	1	1	3	1,492	4,476
Travel	General	International	Maputo	pers	4	1	1	3,000	12,000
Travel	General	Local, in country	Maputo	pers	7	1	3	150	3,150
									-
									4,464,046

6. LOGISTICS CLUSTER PREPAREDNESS ACTIVITIES AND WORK-PLAN

ACTIVITY	DUE BY	RESPONSIBLE
Share Log Cluster Response Plan with the GLCSC and Aviation in Rome	15-Dec-10	Giorgi WFP/GLCSC
Advise clusters/organisations the price ranges for the transportation in the private sector.	15-Dec-10	Dorte WFP/Log Cluster
Advise organisations to initiate tenders for the transportation frame agreements.	15-Dec-10	Dorte WFP/Log Cluster
Identify potential candidates for the deployment (ref. Staffing Requirements)	15-Dec-10	Dorte and Giorgi WFP/Log Cluster
Open Mozambique site on the Log Cluster webpage.	15-Dec-10	Giorgi WFP/GLCSC
Shortlist transportation companies (road and water).	15-Dec-10	Dorte WFP/Log Cluster
Suggest and agree on the standardized/synchronized reporting formats with/to all the clusters/organisations; - Stock report format; - Warehouse capacity report format; - Upstream pipeline report format; - Downstream pipeline report format;	15-Dec-10	Dorte and Giorgi WFP/Log Cluster
Collect logistics information from all the clusters/organisations in uniform formats.	22-Dec-10	Dorte WFP/Log Cluster
Discuss and agree with the Government the Response Plan details.	22-Dec-10	Dorte WFP/Log Cluster
Identify and list the Government's focal point person at the entry points, customs, finance and foreign affairs ministries to facilitate/fast-track importations.	22-Dec-10	Dorte WFP/Log Cluster
Alert GIS unit in Rome on the types of maps to be developed during the crisis.	01-Jan-11	Giorgi WFP/GLCSC
Consolidate reports and share with the humanitarian community.	01-Jan-11	Dorte WFP/Log Cluster
Finalize/endorse agreement with the Government on the fast-track importation.	01-Jan-11	Dorte WFP/Log Cluster
Map number and type of trucks and boats available with the companies in each districts/province.	01-Jan-11	Dorte WFP/Log Cluster
Post existing maps, documents and information (preparedness) on the webpage.	01-Jan-11	Giorgi WFP/GLCSC
Share Response Plan with clusters and agencies for their comments - update accordingly	01-Jan-11	Dorte WFP/Log Cluster
Together with the Gov agree/identify sites for the erection of the prefab warehouses in each location.	01-Jan-11	Dorte WFP/Log Cluster
Update LCA.	Done	
Update organisations and clusters' contact details including logisticians network in the country.	Done	